



# Rajiv Gandhi University

(A Central University)  
Accredited "A" Grade by NAAC

## Citizen Charter

.....

# 2026-27

**Rono Hills, Doimukh,  
Arunachal Pradesh**

# **RAJIV GANDHI UNIVERSITY**

**(A Central University under M/O Education, Govt. of India)**

**Rono Hills, Doimukh, Arunachal Pradesh – 791112, India**



## **MANDATORY DISCLOSURES**

**2026 – 2027**

# **CITIZEN'S CHARTER**

Rajiv Gandhi University (formerly Arunachal University), the premier institute of higher learning in Arunachal Pradesh, has completed forty -two years of its existence. Smt. Indira Gandhi, the then Prime Minister of India, laid the foundation stone of the University on February 4, 1984. Subsequently, it started postgraduate courses from the Academic session 1988-89 in the sprawling and picturesque Rono Hills. The University was converted into a Central University on April 9, 2007 by a notification of erstwhile Ministry of Human Resource Development, Government of India. The University is located atop Rono Hills on a picturesque tableland of 302 acres overlooking the river Dikrong (Pare). It is 6.5 km away from the National Highway 415 and 25 km away from Itanagar, the State capital. The campus is linked with the National Highway by the Dikrong (Pare) bridge.

## **VISION**

Rajiv Gandhi University aspires to be India's most vibrant, energetic, responsive and acclaimed university, to be recognised for excellence in teaching, research and providing the highest quality educational opportunities for the learners of all communities. The University aim sat nurturing their talent by promoting intellectual growth to shape their personality and serve humanity as multi-skilled, socially responsible, creative, adaptable, contributing and morally sound global citizens.

## **MISSION**

Our mission is to provide opportunities and support students from diverse background and assist them to become well-informed global citizens by developing their intellectual, moral, civic and creative capacities to the fullest through multi-faceted education and sustained engagement with local, national and global communities. The University also aims to carry out academic process for achieving excellence through active and dynamic student-teacher participation and inculcate high moral, ethical and professional standards among students which will enable them to develop knowledge and skills necessary to achieve their professional goals so as to improve the performance and provide leadership and service to the community.

## **KEY OBJECTIVES**

The objects of the University shall be to disseminate and advance knowledge by providing instructional and research facilities in such branches of learning as it may deem fit; to make provisions for integrated courses in humanities, natural and physical sciences, social sciences, forestry and other allied disciplines in the educational programmes of the University; to take appropriate measures for promoting innovations in teaching-learning process, inter-disciplinary studies and research; to

educate and train manpower for the development of the State of Arunachal Pradesh; and to pay special attention to the improvement of the social and economic conditions and welfare of the people of that State, their intellectual, academic and cultural development.

## **CORE VALUES**

The university is imbued with the core values of:

- i. Continuous learning and teaching with innovation and progression
- ii. Inclusive human development and growth
- iii. Teamwork
- iv. Quality
- v. Social Responsibility
- vi. Openness and transparency

## **ACADEMIC CALENDAR FOR THE SESSION 2025-2026**

*(For both University and Colleges affiliated to Rajiv Gandhi University)*

### **PART – A**

#### **1. Admission of the PhD, Postgraduate and Undergraduate Programs (FIRST SEMESTER)**

<b>1.1 UNDERGRADUATE PROGRAMS OF THE COLLEGES/UNIVERSITY</b>	
1.1.1 Submission of the filled Application form	On or before 14 <sup>th</sup> August, 2025 (Thursday)
1.1.2 Scrutiny of the Applications and Notification of the eligible candidates	On or before 22 <sup>nd</sup> August, 2025 (Friday)
1.1.3 Admission of the selected candidates	25 <sup>th</sup> August, 2025 (Monday) to 27 <sup>th</sup> August, 2025 (Wednesday)
1.1.4 Notification for waitlisted candidates against vacant seats	28 <sup>th</sup> August, 2025 (Thursday)
1.1.5 Admission of the waitlisted candidates	29 <sup>th</sup> August, 2025 (Friday) – 1 <sup>st</sup> September, 2025 (Monday)
1.1.6 Commencement of the Classes	3 <sup>rd</sup> September, 2025 (Wednesday)

**CITIZEN'S CHARTER**  
**Rajiv Gandhi University**

<b>1.2 POSTGRADUATE, DIPLOMA &amp; CERTIFICATE PROGRAMS OF THE UNIVERSITY AND THE COLLEGES</b>	
1.2.1 Document verification by the Departments/Institutes	4 <sup>th</sup> August, 2025 (Monday) to 7 <sup>th</sup> August, 2025 (Thursday)
1.2.2 Publication of the eligible candidates	On or before 8 <sup>th</sup> August, 2025 (Friday)
1.2.3 Admission of the selected candidates	11 <sup>th</sup> August, 2025 (Monday) to 12 <sup>th</sup> August, 2025 (Tuesday)
1.2.4 Notification for waitlisted candidates against vacant seats	13 <sup>th</sup> August, 2025 (Wednesday)
1.2.5 Admission of the wait listed candidates	14 <sup>th</sup> August, 2025 (Thursday) – 15 <sup>th</sup> August, 2025 (Friday)
1.2.6 Commencement of the Classes	20 <sup>th</sup> August, 2025 (Wednesday)
<b>1.3 POSTGRADUATE, DIPLOMA &amp; CERTIFICATE PROGRAMS OF THE UNIVERSITY AND THE COLLEGES WHERE PERSONAL INTERVIEW IS MANDATORY</b>	
1.3.1 Document verification by the Departments	28 <sup>th</sup> July, 2025 (Monday) to 29 <sup>th</sup> July, 2025 (Tuesday)
1.3.2 Notification of the eligible candidates for Viva-Voce/Physical Test/Personal Interview	On or before 30 <sup>th</sup> July, 2025 (Wednesday)
1.3.3 Department-wise Viva Voce/Physical Test/Personal Interview	On or before 5 <sup>th</sup> August, 2025 (Tuesday)
1.3.4 Notification of the selected candidates	On or before 8 <sup>th</sup> August, 2025 (Friday)
1.3.5 Admission of the selected candidates	11 <sup>th</sup> August, 2025 (Monday) to 12 <sup>th</sup> August, 2025 (Tuesday)
1.3.6 Notification for wait listed candidates against vacant seats	13 <sup>th</sup> August, 2025 (Wednesday)
1.3.7 Admission of the wait listed candidates	14 <sup>th</sup> August, 2025 (Thursday) – 15 <sup>th</sup> August, 2025 (Friday)
1.3.8 Commencement of the Classes	20 <sup>th</sup> August, 2025 (Wednesday)

<b>1.4 PHD ADMISSION</b>	
1.4.1 Document verification by the Departments	28 <sup>th</sup> July, 2025 (Monday) to 29 <sup>th</sup> July, 2025 (Tuesday)
1.4.2 Notification of the eligible candidates for Viva-Voce Examination	On or before 30 <sup>th</sup> July, 2025 (Wednesday)
1.4.3 Department-wise Viva Voce	On or before 5 <sup>th</sup> August, 2025 (Tuesday)
1.4.4 Notification of the selected candidates	On or before 8 <sup>th</sup> August, 2025 (Friday)
1.4.5 Admission of the selected candidates	11 <sup>th</sup> August, 2025 (Monday) to 12 <sup>th</sup> August, 2025 (Tuesday)
1.4.6 Notification for wait listed candidates against vacant seats	13 <sup>th</sup> August, 2025 (Wednesday)
1.4.7 Admission of the wait listed candidates	14 <sup>th</sup> August, 2025 (Thursday) – 15 <sup>th</sup> August, 2025 (Friday)
1.4.8 Commencement of the Classes for Ph.D. coursework	20 <sup>th</sup> August, 2025 (Wednesday)
<b>1.5 RGUCET AND RGUPET</b>	
1.5.1 Declaration of RGUPET/RGUCET (Programmes where Personal Interview/Physical Test/Viva-Voce is mandatory) results (2025)	On or before 25 <sup>th</sup> July 2025 (Friday)
1.5.2 Declaration of RGUCET results for rest of the Programmes (2025)	On or before 31 <sup>st</sup> July 2025 (Thursday)
1.5.1 Filling of the online application form (2026)	10 <sup>th</sup> April 2026 (Friday) – 4 <sup>th</sup> May 2026 (Monday)
1.5.2 Conduct of the Entrance Examination (2026)	3 <sup>rd</sup> June, 2026 (Wednesday) – 13 <sup>th</sup> June, 2026 (Saturday)
1.5.3 Declaration of RGUPET/RGUCET (Programmes where Personal Interview/Physical Test/Viva-Voce is mandatory) result (2026)	On or before 24 <sup>th</sup> July, 2026 (Friday)

**CITIZEN'S CHARTER  
Rajiv Gandhi University**

1.5.4 Declaration of RGUCET results for rest of the Programmes (2026)	On or before 30 <sup>th</sup> July, 2026 (Thursday)
---	---

**\* Subject to change/cancellation in accordance with UGC/MoE guidelines on Ph.D. & Common Entrance Test**

**PART – B**

**2. ADMISSION OF THE INTERMEDIATE SEMESTER STUDENTS**

<b>2.1 ADMISSION OF THE INTERMEDIATE SEMESTER STUDENTS THIRD, FIFTH, SEVENTH SEMESTER</b>	
2.1.1 Regular Admission	28 <sup>th</sup> July, 2025 (Monday) – 30 <sup>th</sup> July, 2025 (Wednesday)
2.1.2 Admission with Late Fee	31 <sup>st</sup> July, 2025 (Thursday) – 1 <sup>st</sup> August, 2025 (Friday)
2.1.3 Commencement of the Classes for the intermediate semesters	4 <sup>th</sup> August 2025 (Monday)
<b>2.2 ADMISSION OF THE SECOND, FOURTH, SIXTH AND EIGHT SEMESTER STUDENTS OF THE UNIVERSITY AND THE COLLEGES</b>	
2.2.1 Regular Admission	19 <sup>th</sup> January, 2026 (Monday) – 20 <sup>th</sup> January, 2026 (Tuesday)
2.2.2 Admission with Late Fee	21 <sup>st</sup> January, 2026 (Wednesday) – 22 <sup>nd</sup> January, 2026 (Thursday)
2.2.3 Commencement of the Classes	21 <sup>st</sup> January 2026 (Wednesday)

**Part – C**

**3. EXAMINATION OF THE MA/M.Sc./M.Com./M.Ed./B.Ed./MCA/Ph.D (Course Work)/MBA/ M.Tech. etc, and Undergraduate and other Diploma Courses based on Semester**

<b>3.1 FIRST, THIRD, FIFTH &amp; SEVENTH SEMESTER.</b>	
3.1.1 Last Date for the Submission of the Examination Forms	14 <sup>th</sup> November, 2025 (Friday)
3.1.2 Last Date for the Submission of the eligible students list and Internal assessment marks by the Colleges and the University Departments/Institutes to CoE office	19 <sup>th</sup> November, 2025 (Wednesday)
3.1.3 Conduct of the Examination	2 <sup>nd</sup> December, 2025 (Tuesday) to 19 <sup>th</sup> December, 2025 (Friday)
3.1.4 Declaration of the Results for UG, PG and PhD Coursework	On or before 9 <sup>th</sup> January 2026 (Friday)
<b>3.2 SECOND, FOURTH, SIXTH &amp; EIGHTH SEMESTER.</b>	
3.2.1 Last Date for the Submission of Examination Forms	4 <sup>th</sup> May, 2026 (Monday)
3.2.2 Last Date for the Submission of the eligible students list and Internal assessment marks by the Colleges and University Departments/Institutes to CoE office	7 <sup>th</sup> May, 2026 (Thursday)
3.2.3 Conduct of the Examination	11 <sup>th</sup> May, 2026 (Monday) to 29 <sup>th</sup> May, 2026 (Friday)
3.2.4 Declaration of the Result for both UG and PG on or before	On or before 10 <sup>th</sup> June, 2026 (Wednesday)

**Part – D**

**4. VACATION AND REOPENING OF THE COLLEGES AND THE UNIVERSITY DEPARTMENTS/INSTITUTES**

4.1 Summer Vacation for University Departments/ Institutes and Colleges (2024-25)	16 <sup>th</sup> June, 2025 (Monday) – 18 <sup>th</sup> July, 2025 (Friday)
4.2 Reopening for University Departments/ Institutes and Colleges (2024-25)	21 <sup>st</sup> July, 2025 (Monday)
4.3 Winter Recess (2024-25) for Colleges and University Departments/Institutes	22 <sup>nd</sup> December, 2025 (Monday) – 16 <sup>th</sup> January, 2026 (Friday)
4.4 Reopening for colleges and University Departments/Institutes after Winter Recess (2024-25)	19 <sup>th</sup> January, 2026 (Monday)
4.5 Summer Vacation (2025-26) for Colleges and University Departments/Institutes	15 <sup>th</sup> June, 2026 (Monday) – 17 <sup>th</sup> July, 2026 (Friday)
4.6 Reopening (2025-26) for Colleges and University Departments/ Institutes	20 <sup>th</sup> July, 2026 (Monday)

**PART – E**

**5. Other Activities**

5.1 University Sports & Cultural Meet	3 <sup>rd</sup> & 4 <sup>th</sup> week of October, 2025
5.2 Convocation	30 <sup>th</sup> November, 2025 (Sunday) subject change

**ACADEMIC CALENDAR FOR THE SESSION 2026-2027**

*(For both University and Colleges affiliated to Rajiv Gandhi University)*

**PART – I**

**A. Admission of the PhD, Postgraduate and Undergraduate Programs (FIRST SEMESTER)**

**B. Admission of Intermediate Semester Students**

Sl. No.	Events	Dates
1.	Completion of admission process for the <b>FIRST SEMESTER</b>	
	(a) UG Programmes of the University & Colleges	On or before 31 July 2026 (Friday)
	(b) PG Programmes of the University & Colleges	On or before 7 August 2026 (Friday)
	(c) PG Diploma & Certificate Course	On or before 7 August 2026 (Friday)
	(d) PhD Programmes of the University	
	(i) Summer Session	On or before 14 August 2026 (Friday)
	(ii) Winter Session	On or before 29 January 2027 (Friday)
2.	Fee payment, hostel admission and allotment of rooms for the boarders	On or before 14 August 2026 (Friday)
3.	Opening of the Hostels	16 August 2026 (Sunday)
4.	Commencement of Classes for Newly Admitted Students	17 August 2026 (Monday)
5.	Induction Programme for Newly Admitted Students	On or before 3 September 2026 (Thursday)
Sl. No.	Events	Dates
1.	Completion of admission process for the <b>ODD SEMESTER</b> of the University & Colleges	On or before 24 July 2026 (Friday)
2.	Fee payment, hostel admission and allotment of rooms for the boarders	On or before 25 July 2026 (Saturday)
3.	Opening of the Hostels	26 July 2026 (Sunday)
4.	Commencement of Classes	27 July 2026 (Monday)
5.	Hostel Closure	20 December 2026 (Sunday)
6.	Completion of admission process for the <b>EVEN SEMESTER</b> of the University & Colleges	On or before 22 January 2027 (Friday)
7.	Fee payment, hostel admission and allotment of rooms for the boarders (if any)	On or before 23 January 2027 (Saturday)
8.	Opening of the Hostels	24 January 2027 (Sunday)
9.	Commencement of Classes	25 January 2027 (Monday)

**CITIZEN'S CHARTER**  
**Rajiv Gandhi University**

10.	Hostel Closure	12 June 2027 (Sunday)
-----	----------------	-----------------------

**PART II**

**C. Examination**

Sl. No.	Events	Dates
1.	<b>Examinations for the ODD SEMESTERS</b>	
	(a) Completion of the Internal Assessment & Evaluation	On or before 20 November 2026 (Friday)
	(b) Submission of the list of eligible students to appear in the end-of-semester examination & Internal Assessment marks by the University Departments/Institutes & Colleges	20 November 2026 (Friday)
	(c) Submission of Online Examination forms	23 November 2026 (Monday) to 25 November 2026 (Wednesday)
	(d) Completion of Semester Classes	20 November 2026 (Friday)
	(e) Remedial Classes	23 November 2026 (Monday) to 27 November 2026 (Friday)
	(f) End-Semester Examination	2 December 2026 (Wednesday) to 19 December 2026 (Saturday)
	(g) Declaration of Results	On or before 8 January 2027 (Friday)
	<b>Examinations for the EVEN SEMESTERS</b>	
	(a) Completion of the Internal Assessment & Evaluation	On or before 30 April 2026 (Friday)
	(b) Submission of the list of eligible students to appear in the end-of-semester examination & Internal Assessment marks by the University Departments/Institutes & Colleges	3 May 2027 (Monday)
	(c) Submission of Online Examination forms	5 May 2027 (Wednesday) to 7 May 2027 (Friday)
	(d) Completion of Semester Classes	7 May 2027 (Friday)
	(e) Remedial Classes	10 May 2027 (Monday) to 14 May 2027 (Friday)
	(f) End-Semester Examination	17 May 2027 (Monday) to 4 <sup>th</sup> June 2027 (Friday)
	(g) Declaration of Results	On or before 18 June 2027 (Friday)

**PART III**

**D. Vacation and Reopening of the University Departments/Institutes & Colleges**

**CITIZEN'S CHARTER**  
**Rajiv Gandhi University**

Sl. No.	Events	Dates
1.	Summer Vacation for the University Departments/Institutes & Colleges (2026)	15 June 2026 (Monday) to 17 July 2026 (Friday)
2.	Reopening for the University Departments/Institutes & Colleges (2026)	20 July 2026 (Monday)
3.	Winter Recess for the University Departments/Institutes & Colleges (2026-27)	21 December 2026 (Monday) to 15 January 2027 (Friday)
4.	Reopening for the University Departments/Institutes & Colleges (2026-27)	18 January 2027 (Monday)
5.	Summer Vacation for the University Departments/Institutes & Colleges (2027)	14 June 2027 (Monday) to 16 July 2027 (Friday)
6.	Reopening for the University Departments/Institutes & Colleges (2027)	19 July 2027 (Monday)

**PART IV**

**D. University Extra Curricular Activities**

Sl. No.	Events	Dates
1.	University Sports and Cultural Meet (AY 2026-27)	1st or 2nd Week of October 2026
2.	Convocation (AY 2025-26)	3rd or 4th Week November 2026

**ADMISSIONS**

University has implemented NHEQF and NCrf based curriculum framework (since 2023-24) in all its academic programmes as per NEP-2020. Rajiv Gandhi University admission processes is covered through external test-based system: (i) CUET-UG marks for under graduate programmes with 10+2 eligibility, (ii) CUET-PG marks for Post Graduate and Diploma programmes, (iii) UGC/CSIR-NET marks for PhD programmes, (iv) NCTE-marks for ITEP, (v) marks of qualifying examination for Certificate programmes. In case of any vacant seats irrespective to the mode of entry/admission to the university academic programmes are based on merit and existing guidelines (<https://admissions.rgu.ac.in/>).

**POST GRADUATE PROGRAMMES**

<b>Sl. No.</b>	<b>Programme</b>	<b>No. of seats</b>	<b>Eligibility</b>	<b>Duration</b>
1	MSc in Agriculture Economics	14 (1)	Graduate in B.Sc. Agriculture with 50 percent marks from recognised institutes	2 years
2	MSc in Agronomy	14(1)	Graduate in B.Sc. Agriculture with 50 percent marks from recognised institutes	2 years
3	MA Anthropology	42 (4)	Bachelor's degree in Anthropology or allied subjects with 45% marks.	2 years
4	MSc in Applied Geology	24 (2)	Bachelor's degree with Geology as main subject	2 years
5	MSc in Botany	30 (3)	Graduates under 10+2+3 pattern of education from Rajiv Gandhi University or any other UGC recognized University with 45% marks in Botany.	2 years
6	Master in Business Administration (MBA)	53 (5)	Bachelor's Degree or equivalent in any discipline from recognized University with a minimum of 50% marks in aggregate.	2 years
7	MSc in Chemistry	33 (3)	Graduates under 10+2+3 pattern of education from Rajiv Gandhi University or any other UGC recognized University with 45% marks in Chemistry.	2 years
8	Master in Commerce	65 (6)	Graduates under 10+2+3 pattern of education from Rajiv Gandhi University or any other UGC recognized University with 45% marks in Commerce.	2 years
9	MCA (CSE)	55 (5)	BCA degree of minimum 3 years duration Or any bachelor degree of minimum 3 years duration from a UGC recognised University with Mathematics/Statistics as a compulsory subject at 10+2 level.	2 years
10	M.Tech. (CSE)	22 (2)	Bachelor's degree in Engineering/Technology or equivalent in an appropriate area or MSc in Computer Science/Information Technology or MCA from a recognised institution. Candidates with a valid GATE score will be given preference	2 years
11	MA in Defence & Strategic Studies	38 (4)	Graduates under 10+2+3 pattern of education from Rajiv Gandhi University or any other UGC recognized University with 45% marks.	2 years
12	MA in Economics	72 (7)	Graduates under 10+2+3 pattern of education from Rajiv Gandhi University or any other UGC recognized University with 45% marks in Economics.	2 years
13	MA in Education	62 (6)	Graduates under 10+2+3 pattern of education from Rajiv Gandhi University or	2 years

**CITIZEN'S CHARTER**  
**Rajiv Gandhi University**

			any other UGC recognized University with 45% marks in Education.	
14	M.Tech. in Elec. & Comm. Engineering	22 (2)	Bachelor's degree in Technology, Electronics Engineering or MSc. (Electronics) or AMIETE or IETE graduates.	2 years
15	MA in English	60(6)	Graduates under 10+2+3 pattern of education from Rajiv Gandhi University or any other UGC recognized University with 45% marks in English.	2 years
16	MSc in Agricultural Entomology	14 (1)	Graduates in B.Sc. Agriculture / Horticulture from recognised institutes with a minimum of 55% marks are eligible	2 years
17	MSc in Food Technology	20 (2)	Graduation under 10+2+3/4 in Food Technology/ Biology/ Biochemistry or equivalent (Minimum 50%).	2 years
18	MA/MSc in Geography	59 (5)	Graduates under 10+2+3 pattern of education from Rajiv Gandhi University or any other UGC recognized University with 45% marks in Geography.	2 years
19	MA in Hindi	62 (6)	Graduates under 10+2+3 pattern of education from Rajiv Gandhi University or any other UGC recognized University with 45% marks in Hindi.	2 years
20	MA in History	84 (8)	Graduates under 10+2+3 pattern of education from Rajiv Gandhi University or any other UGC recognized University with 45% marks in History.	2 years
21	Master of Law (LLM-Legum Magister)	30 (3)	Graduation degree in law.	2 years
22	MA in Mass Communication	41 (4)	Graduates degree from any UGC recognised university with 45% marks.	2 years
23	MSc in Mathematics & Computing	50 (5)	Graduates under 10+2+3 pattern of education from Rajiv Gandhi University or any other UGC recognized University with 45% marks in Mathematics.	2 years
24	Master of Performing Arts (M.P.A.) in Hindustani Classical Music (vocal)	17 (1)	Graduates under 10+2+3 pattern from any UGC recognized University with 45% marks in Three Years of B.Music/B.P.A. Honours courses in Music/Performing Arts.	2 years
25	MSc in Physics	34 (3)	Graduates under 10+2+3 pattern of education from Rajiv Gandhi University or any other UGC recognized University with 45% marks in Physics.	2 years
26	MA in Political Science	76(7)	Graduates under 10+2+3 pattern of education from Rajiv Gandhi University or any other UGC recognized University with 45% marks in Political Science.	2 years
27	MA in	34 (3)	Any graduate under 10+2+3 scheme or	2 years

**CITIZEN'S CHARTER**  
**Rajiv Gandhi University**

	Psychology		an equivalent recognised by UGC with a minimum 50 % marks.	
28	Master of Social Work(MSW)	43 (4)	Bachelor's Degree or equivalent in any stream from a recognized University with a minimum of 50% marks in aggregate.	2 years
29	MA in Sociology	67 (6))	BA Sociology with 45% marks in Honours/Major or 50% marks in Pass Course in the subject concerned.	2 years
30	MSc in Sports Biomechanics	24 (2)	Bachelor's Degree in Sports Sciences / Physical Education and Sports / Physics with Mathematics / Physiotherapy / Computer Science / Computer Application /Information Technology / Software Engineering or equivalent Mathematics /Statistics / Physics / Electronics / Applied Sciences / Engineering (Computer Science / E&I / IT) or equivalent thereto in 10+2+3 or 10+2+4 pattern from a recognized university with a minimum of 55% marks in aggregate.	2 years
31	MSc in Sports Physiology	24 (2)	Bachelor's Degree in Sports Science / Physical Education and Sports / Physiology / Human physiology / Occupation Therapy / Physiotherapy / Biotechnology /Zoology / Microbiology / Biochemistry / Life Sciences / MBBS or equivalent thereto in 10+2+3 or 10+2+4 pattern from a recognized university with a minimum of 50% marks in aggregate of 55% marks in aggregate.	2 years
32	MSc in Sports Psychology	24 (2)	Bachelor's Degree in Sports Science / Physical Education and Sports / Psychology / BPEd./B.A. (Hons) in Psychology or Bachelor's Degree with Psychology/Sport Psychology as one of the subject thereto in 10+2+3 or 10+2+4 pattern from a recognized university with a minimum of 55% marks in aggregate.	2 years
33	MSc in Statistics	12 (1)	B.Sc. in Statistics / Mathematics / Statistics with Computer Applications (Minimum 50%). 60% of seats shall be reserved for pure Statistics applicants	2 years
34	MSc in Strength Training & Conditioning	20 (2)	Bachelor's Degree in Sports Science / Physical Education and Sports / 1 Year Diploma In Sports Coaching/ 1 Year Diploma in Fitness Management as one of the course thereto in 10+2+3 or 10+2+4 pattern from a recognized university with a minimum of 55% marks in aggregate.	2 years

**CITIZEN'S CHARTER**  
**Rajiv Gandhi University**

35	MA in Tribal Studies	25 (2)	Graduates under 10+2+3 pattern of education from Rajiv Gandhi University or any other UGC recognized University with 45% marks.	2 years
36	MSc in Zoology	32 (3)	Graduates under 10+2+3 pattern of education from Rajiv Gandhi University or any other UGC recognized University with 45% marks in Zoology.	2 years
37	MSc in Horticulture Vegetable science	10(1)	Candidate who has passed the B. Sc. (Hons) Agriculture/ B.Sc.Agriculture examination with 55 % marks.Relaxation to the extent of 5% in the minimum marks will be given to the candidates belonging to Scheduled Caste and Scheduled Tribes, OBC-NCL, PwD candidates	2 years
38	MSc in Horticulture Fruit science	10(1)	Candidate who has passed the B. Sc. (Hons) Agriculture/ B.Sc. Agriculture examination with 55 % marks. Relaxation to the extent of 5% in the minimum marks will be given to the candidates belonging to Scheduled Caste and Scheduled Tribes, OBC-NCL, PwD candidates	2 years
39	M. Tech. in Computer Science & Engineering (CSE)	22 (2)	Bachelor's degree in Engineering/Technology or equivalent in an appropriate area or MSc in Computer Science/Information Technology or MCA from a recognised institution. Candidates with a valid GATE score will be given preference	2 years
40	M. Tech. in Electronics & Communication Engineering (ECE)	22 (2)	B.Tech./B.E/AMIETE in Electronics, ECE, EEE, IT, Instrumentation or M.Sc. (Electronics)/ allied subjects with 55% marks in aggregate. Candidates with a valid GATE sore will be given preference.	2 years
41	M.Sc. in Plant Pathology	12(1)	Graduate in B.Sc. Agriculture with 50 percent marks from recognised institutes	2 years
42	M. Sc. in Soil Sciences & Agricultural Chemistry	12(1)	Graduate in B.Sc. Agriculture with 50 percent marks from recognised institutes	2 years
43	M. Sc. in Genetics & Plant Breeding	12(1)	Graduate in B.Sc. Agriculture with 50 percent marks from recognised institutes	2 years
44	M. Tech in Agricultural Engineering with Specialisation in Farm Machinery and Power	12(1)	Graduates in B. Tech. with 60 percent marks in Agricultural Engineering from any UGC recognised University / Institute.	2 years

**CITIZEN'S CHARTER**  
**Rajiv Gandhi University**

	Engineering			
45	M Lib & Inf Sc	20(2)	Bachelor in Library and Information Sc from any recognised University / Institution with 50 percent marks	2 years
46	M Lib & Inf Sc (2Y integrated)	30(3)	Bachelor in any discipline from any recognised University / Institution	2 years
47	Master of Physical Education (M.PEd)	40(4)	Bachelor in Physical Education (B.P.Ed) with at least 50% Marks OR Bachelor of Science (B.Sc.) in Health & Physical Education with at least 50% marks. Relaxation to the extent of 5% marks will be given to the candidates belonging to Scheduled Caste and Scheduled Tribes, OBC-NCL, PwD candidates.	2 years

**FOUR YEAR UNDER-GRADUATE PROGRAMMES (FYUP):**

Sl. No.	Programmes	Total Seats	Eligibility	Remarks
1	BSc in Agriculture	26 (2)	Candidate who has passed the 12th (10+2) class examination from any recognized board in Science with any three of: Physics, Chemistry, Biology, Mathematics / Agricultural Science	--
2	BCA (Bachelor in Computer Applications)	29 (2)	10+2 passed with Mathematics/Statistics OR A recognized 3-year Diploma in Engineering/Technology in CSE / ECE / IT	--
3	BSc in Geology	34 (3)	Candidate who has passed the 12th (10+2) class examination from any recognized board in Physical Science / PCM Group with Physics, Chemistry, and Mathematics	--
4	BFA (Bachelors in Fine Arts)	29 (2)	Candidate who has passed the 12th (10+2) class examination from any recognized board in Arts/Science/Commerce	Applicants will be required to appear for skill test in the

				Department of Fine Arts, RGU
5	B. Music	29 (2)	Candidate who has passed the 12th (10+2) class examination from any recognized board in Arts/Science/Commerce	Applicants will be required to appear for skill test in the Department of Music, RGU

**FOUR-YEAR UNDERGRADUATE PROGRAMMES (FYUP):**

**Offered in the INSTITUTE OF UNDERGRADUATE STUDIES (IUGS)**

Four-Year Major Programmes - Admission Details

Programmes	No. of Seats	Eligibility
Four Year BSc. (Major) in Physics	12 + 1(EWS)	Candidate who has passed the 12 (10+2) class examinations from any recognised board with Physics, Chemistry & Mathematics.
Four Year BSc. (Major) in Chemistry	12 + 1(EWS)	Candidate who has passed the 12 (10+2) class examinations from any recognised board with Physics, Chemistry & Mathematics.
Four Year BSc. (Major) in Mathematics	12 + 1(EWS)	Candidate who has passed the 12 (10+2) class examinations from any recognised board with Physics, Chemistry & Mathematics.
Four Year BSc. (Major) in Statistics	12 + 1(EWS)	Candidate who has passed the 12 (10+2) class examinations from any recognised board with Physics, Chemistry & Mathematics.
Four Year BA (Major) in Anthropology	12 + 1(EWS)	Candidate who has passed the 12 (10+2) class examinations (in

**CITIZEN'S CHARTER**  
**Rajiv Gandhi University**

		any stream) from any recognised board.
Four Year BA (Major) in Sociology	12 + 1(EWS)	Candidate who has passed the 12 (10+2) class examinations (in any stream) from any recognised board.
Four Year BA (Major) in Psychology	30 + 3(EWS)	Candidate who has passed the 12 (10+2) class examinations (in any stream) from any recognised board.
Four Year BA (Major) in Social Work (BSW)	30 + 3(EWS)	Candidate who has passed the 12 (10+2) class examinations (in any stream) from any recognised board.
Four Year BA (Major) in Botany	20 + 2(EWS)	Candidate who has passed the 12 (10+2) class examinations from any recognised board with Physics, Chemistry & Biology.
Four Year BA (Major) in Zoology	20 + 2(EWS)	Candidate who has passed the 12 (10+2) class examinations from any recognised board with Physics, Chemistry & Biology.
Four Year BA (Major) in Commerce	24 + 2(EWS)	Candidate who has passed the 12 (10+2) class examination from any recognized board in Arts, Commerce or Science with Mathematics as a subject.
Bachelor of Business Administration	20 + 2(EWS)	Candidate who has passed the 12 (10+2) class examination from any recognized board in Arts, Commerce / Science

**FOUR YEAR INTEGRATED TEACHER EDUCATION PROGRAMME (BA-B.Ed)**

Four-Year Integrated Teacher Education Programme - Admission Details

Programme	No. of Seats	Eligibility
Four Year Integrated Teacher Education Programme (BA-B.Ed.)	50 (5)	Candidate who has passed the 12 (10+2) class examinations from any recognised board in any discipline.

**PG DIPLOMA PROGRAMMES**

Sl. No.	Programmes	No. of seats	Eligibility	Duration
1	<b>PGDBI</b> (Offered by Dept. of Commerce)	39 (3)	Graduates in any discipline from a UGC recognised university with 50% marks.	1 year
2	<b>PGDMC</b> (Offered by Dept. of Mass Communication)	38 (3)	Graduates degree from any UGC recognised university with 45% marks.	1 year
3	<b>PGDFH</b> (Offered by Dept. of Hindi)	26 (2)	Graduate with Hindi as one of the subject having English as medium of instructions in either Honours/Major or Pass Course system from UGC recognised University.	1 year
4	<b>PGDGI</b> (Offered by Dept. of Geography)	31 (3)	M.A/M.Sc in Physics, Mathematics, Applied Mathematics, Statistics, Geology, Oceanography, Geography, Urban and Regional planning, any natural/environmental sciences or BE/B.Tech in Civil Engineering, Electrical Engineering, Computer Science Agriculture Engineering, Urban and Regional Planning or B.Sc (4 years) Agriculture/ Forestry with 55% marks.	1 year
5	<b>PGDTM</b> (Offered by Dept. of Management)	26 (2)	Graduates in any discipline with 50% of marks from any UGC recognized university. 5% relaxation in marks shall be applicable for SC/ST applicants.	1 year
6	<b>PGDYTE</b> (Offered by Dept. of Phy. Edu.)	24 (2)	Graduate in any discipline with 45% marks.	1 year
7	<b>PGDES</b>	19 (2)	Graduate in Social Science with	1 year

**CITIZEN'S CHARTER**  
**Rajiv Gandhi University**

	(Offered by Dept. of Sociology)		45% marks.	
8	<b>PGDB</b> (Offered by Centre for Excellence in Biodiversity)	19 (2)	Graduates in Science from a UGC recognised university with 45% marks.	1 year
9	<b>PGDM</b> (Offered by Dept. of Geography)	22(2)	Graduate in any discipline from recognised university	1 year
10.	<b>PGDFS</b> (Offered by Dept. of Anthropology)	16(1)	Graduate in any discipline from recognised university with 45% marks	1 year

**UG PROGRAMMES (after Bachelor's Degree)**

Academic Programmes and Eligibility Criteria

Sl. No.	Programmes	No. of Seats (University Campus)	No. of Seats in Affiliated Colleges	Eligibility
1	B.Ed.	100 (10)	850	Candidates with M.A./ M.Sc./ M.Com./ B.A./ B.Sc./ B.Com./ B.E./B.Tech. (with specialization in Science & Mathematics and 55% marks) degree (10+2+3 scheme) from Rajiv Gandhi University or any other recognized University with 50% marks in graduation.
2	B.Ed. (Special Education)	--	30	Candidates with M.A./ M.Sc./ M.Com./ B.A./ B.Sc./ B.Com./ B.E./B.Tech. (with specialization in Science & Mathematics and 55% marks) degree (10+2+3 scheme) from Rajiv Gandhi University or any other recognized University with 50% marks in graduation.
3	Bachelor of Physical Education (B.P.Ed.)	60 (6)	--	1. Bachelor's Degree in any Discipline with 50% marks and having at least participation in the Inter College/ Inter Zonal/District/ School competition in Sports and Games as recognized by the AIU/IOA/SGFI/Govt. of India. Or  2. Bachelor's Degree in Physical Education with 45% marks

**CITIZEN'S CHARTER  
Rajiv Gandhi University**

				<p>Or</p> <p>3. Bachelor's Degree in any Discipline with 45% marks and studied Physical Education as compulsory/ elective subject. Or</p> <p>4. Bachelor's Degree with 45% marks and having participated in National/ Inter University/State level/ or secured 1st , 2nd or 3rd position in Inter college/Inter Zonal/District/School competitions in sports and games as recognized by the AIU/IOA/SGFI/Govt. of India. Or</p> <p>5. Bachelor's Degree with participation in International Competitions or secured 1st, 2nd or 3rd position National/Inter- University competitions in sports and games as recognized by respective federations/AIU/IOA/SGFI/Govt. of India.</p> <p>Or</p> <p>6. Graduation with 45% marks and at least 3 three years of teaching experience (for deputed/in-service candidates i.e., trained Physical Education teachers and coaches)</p>
4	LLB	--	300	Graduates from any UGC recognized University with 45% marks.

**CERTIFICATE COURSES**

<b>Sl. No.</b>	<b>Name of the programme</b>	<b>Duration (Months/ Week)</b>	<b>No. of seats</b>	<b>Eligibility</b>	<b>Dept. offering the Course</b>
1	Communicative English	3	36 (3)	Degree in any discipline	English

**CITIZEN'S CHARTER  
Rajiv Gandhi University**

2	Environmental Sanitation	6	25 (2)	10+2 passed or equivalent from a recognized board.	Social Work
3	Strength Training & Conditioning	6	12 (1)	Bachelor Degree in Sports Science / Physical Education and Sports / 1 Year Diploma In Sports Coaching/ 1 Year Diploma in Fitness Management as one of the course thereto in 10+2+3 or 10+2+4 pattern from a recognized university with a minimum of 55% marks in aggregate with 5% relaxation for (SC/ST).	-do-
4	Sports Anthropometry	6	12 (1)	Bachelor/Master Degree in Sports Sciences /Physical Education and Sports/ Anthropology or equivalent thereto in 10+2+3 or 10+2+4+2 pattern from a recognized university with a minimum of 50% marks in aggregate	-do-
5	Certificate Courses in (Sports Coaching):  i. Badminton ii. Boxing iii. Football iv. Table Tennis  Massage Therapy	6 week	50 Seat Each	10+2 passed or equivalent from a recognized board.	-do-

**DEPARTMENT /INSTITUTE OFFERING PH.D.**

Sl. No.	PhD Programme	Sl. No.	PhD Programme	Sl. No.	PhD Programme
1	Anthropology	14	Food Technology	27	Physical Education
2	Agronomy	15	Genetics & Plant Breeding	28	Physics
3	Agricultural Economics	16	Geography	29	Plant Pathology

**CITIZEN'S CHARTER**  
**Rajiv Gandhi University**

4	Agricultural Engineering	17	Geology	30	Political Science
5	Botany	18	Hindi	31	Psychology
6	Chemistry	19	History	32	Social Work
7	Commerce	20	Horticulture	33	Sociology
8	CSE	21	Law	34	Soil Science & Agricultural Chemistry
9	Economics	22	Management	35	Statistics
10	ECE	23	Mass Communication	36	Tribal Studies
11	Education	24	Mathematics	37	Zoology
12	English	25	Music		
13	Entomology	26	National Security Studies		

Intake capacities for admission to Ph.D. programmes in various departments/institutes are dynamic in nature, as it depends upon the subsequent vacancies arrived year after year.

**B.Ed. ADMISSION**

Admissions will be carried out through CUET-PG 2026.

Out of the 100 seats, a few seats are reserved for deputed teachers nominated by the Department of Education, Govt. of Arunachal Pradesh, and one seat each for Sports Quota and Wards of RGU Employees (Supernumerary). Remaining seats and additional 10 seats for EWS are equally divided between Direct seats and Paid seats to be filled as per merit and reservation for various categories. The admission to the Paid seats in B. Ed. will be given on the basis of merit in entrance test and additional weightage if any, on payment of additional fees over and above the prescribed B.Ed. fee. Same reservation rule of the University shall be followed for paid seats also. However, the discipline wise quota for both Direct and Paid seats shall be fixed for admission by the University.

B.A./ B.Sc./ B.Com./ BFA/ B.MUS./ BCA/ B.Sc. in Agriculture/Horticulture under 10+2+3 scheme from Rajiv Gandhi University or any other recognized University with 50% or above marks in graduation are eligible for admission to B. Ed. Two Year Programme. CUET-PG based seats categorized into science and arts stream. Please visit admissions.rgu.ac.in for subject codes for entrance exam.

Candidates having 55% or above marks in Post Graduate Degree (M.A./M.Sc./M.Com./MCA/M.Sc. in Agriculture/Horticulture OR B.E./B.Tech. with specialization in Mathematics with a minimum of 55% marks)

However, the state Govt. sponsored (deputed) teachers having 10+2+2 pattern can

be admitted in B.Ed. programme. SC, ST and OBC (NCL) candidates shall be given a relaxation of 5% marks. The OBC (NCL) candidates should produce Non-Creamy Layer (NCL) certificate issued for the current calendar year. Selected candidates for Direct and Paid seats have to submit an undertaking that they are not in service. However, if anyone is in-service, then, he/she will have to submit a "No Objection Certificate" with two years leave approval letter from his/her employer failing which the admission shall be cancelled.

**For all other admission related details:**

<https://rgu.ac.in/>

<https://admissions.rgu.ac.in/>

### **BACHELOR OF PHYSICAL EDUCATION (B.P.Ed.) ADMISSION**

**Admissions will be carried out through CUET-PG 2026.**

#### **(A) Eligibility for admission : As per NCTE Norms**

- i) Bachelor Degree in any Discipline with 50% marks and having at least participation in the Inter College/ Inter Zonal/District/ School competition in Sports and Games as recognized by the AIU/IOA/SGFI/Govt. of India. Or
- ii) Bachelor Degree in Physical Education with 45% marks Or
- iii) Bachelor Degree in any Discipline with 45% marks and studied physical education as compulsory/ elective subject. Or
- iv) Bachelor Degree with 45% marks and having participated in National/ Inter University/State level/ or secured 1st , 2nd or 3rd position in Inter college/Inter Zonal/District/School competitions in sports and games as recognized by the AIU/IOA/SGFI/Govt. of India. Or
- v) Bachelor Degree with participation in International Competitions or secured 1st , 2nd or 3rd position National/Inter- University competitions in sports and games as recognized by respective federations/AIU/IOA/SGFI/Govt. of India. Or
- vi) Graduation with 45% marks and at least 3 three years of teaching experience (for deputed/in-service candidates i.e., trained physical education teachers and coaches).

#### **(B) Physical Fitness Test (at RGU Campus)**

- i) **Physical Fitness:** Marks will be awarded in Physical Fitness on the basis of performance in 50 meters sprint, standing broad jump, Medicine Ball (over head back throw) and 1000 meters run/walk. The performance shall be converted into points as per norms developed by the Department.
- ii) **Proficiency in Games & Sports:** Marks will be awarded by a committee on the basis of skills performed and performance in one game/sport, as opted by the candidate. Testing shall be done in following games/sports: Archery, Badminton, Boxing, Cricket, Football, Handball, Judo, Kabaddi, Kho-Kho, Lawn Tennis, Table Tennis, Track & Field, Volleyball, Weight-Lifting, Power Lifting, Yoga.

**(c) Award of Bonus Marks (Sports Participation)**

**All those candidates who have represented India in any International Championship OR who have won positions during last three academic sessions (i.e. July 2023 to April 2026) in the Junior / Senior National Championships, being organized by respective National Federation / All India or Inter-Zonal Inter-University Tournament or SGFI National meets, will receive Bonus Marks as per the criteria given below:**

- iii) Represented India in any game/sport Sponsored by IOA/Federation:  
10 Marks
- iv) Position holders at Inter-State Championship Organized by Government Recognized Association/Federation in games and sports.  
1<sup>st</sup> Place : 10 Marks  
2<sup>nd</sup> Place : 9 Marks  
3<sup>rd</sup> Place : 8 Marks
- v) Position Holder at All India/Inter-Zonal Inter University Competitions/Junior National Competitions Organized by Government Recognized Association/ Federation in games and sports  
1<sup>st</sup> Place : 8 Marks  
2<sup>nd</sup> Place : 7 Marks  
3<sup>rd</sup> Place : 6 Marks
- vi) Position holder at SGFI National Competitions  
1<sup>st</sup> Place : 6 Marks  
2<sup>nd</sup> Place : 5 Marks  
3<sup>rd</sup> Place : 4 Marks

**(D) Medical Test**

Since the course includes a vigorous physical training process, the students' selection will only be final, subject to the clearance of medical examination of the selected candidates by the University Health Centre, inclusive of physical examination as well as laboratory tests such as HSAG.

**(E) Hostel and Absenteeism:**

All students are required to compulsorily stay in the hostel and absenteeism in both theory and activity classes will be dealt with disciplinary action.

## **HOSTEL MANAGEMENT**

The University maintains 15 (fifteen) halls of residence for students (7 for Men, 7 for Women & 1 Common) with accommodation capacity of 1480 residents with facilities like common room, TV and Indoor Games. The residents of the halls run their own mess on co-operative basis. Each hall of residence is managed by a Warden. There is a student prefect in each hall. Admission to halls of residence is made as per reservation and merit fixed for the purpose by the University. It is to be noted however, that during summer vacation and winter break boarders shall have to vacate the halls of residence for the routine maintenance of the halls. Accommodation in separate halls of residences for B.Ed., regular and Ph.D. scholars are also provided on merit.

A committee for disciplined management and ensuring of proper functioning of the hostels are constituted comprising of the following members:

1. Registrar
2. Dean, Students Welfare
3. Chief Hostel Warden
4. Hostel Wardens
3. Deputy Hostel wardens

Any complaint related to food, cleanliness and sanitation must be addressed to the warden of the hostels. Complaints of routine nature may be addressed to the Deputy Hostel Wardens. The Chief Hostel Warden and Deputy Hostel Warden are expected to act swiftly on the complaints. All such complaints must be disposed of within a single day. Gross complaints addressed to the chief warden are expected to be disposed of within 2 working days. Issues of security particularly in the girl's hostel must be disposed of within the completion of working days. The Chief Hostel Warden with the support of the DSW and Senior Security Officer ensures the redressal of any breach of security complaint in any hostel. The same shall be brought to the knowledge of the Registrar.

## **STUDENTS ADVISORY COMMITTEE**

Students Advisory Committee shall be constituted under RGU Statutes No. 23 (1) at Page 39 of the Rajiv Gandhi University Act 2006 with the committee notified by Registrar upon due approval of the competent authority and as per amendments and directives from MHRD/UGC or any competent ministry from time to time.

There shall be a Chairperson, a Member Secretary and other members that shall be decided on review basis as per need. The Vice Chancellor has the power to change the constituent of the committee; and in consultation with the Pro-Vice Chancellor and Registrar, shall decide the number of the members under a sound working principles, with a minimum number of members as Five (5).

## **Functions of the Committee**

The functions of the committee shall be as follows:

- i. To examine the expectation of the students from the university and to recommend student welfare measures and changes in curricular and co-curricular activities.
- ii. To recommend various steps to be taken to solve the issues related to the student
- iii. To make aware and advise students to avail various schemes / coaching / placement for building up the career.
- iv. To develop and manage University Alumni Association and its activities.
- v. To submit an "Action Taken" Report in every quarter to the Registrar.

## **ANTI-RAGGING COMMITTEE**

Anti-Ragging Committee shall be constituted under RGU Statutes No. 23 (1) at Page 39 with the committee notified by Registrar upon due approval of the competent authority and as per amendments and directives from MHRD/UGC or any competent ministry from time to time.

There shall be a Chairperson, a Member Secretary (both of the level of a Professor) and other members (including the DSW, and Chief Warden) that shall be decided on review basis as per need. The Anti-Ragging Committee shall be nominated by the VC, and consisting of representatives of civil and police administration, local media, Non-Government Organizations involved in youth activities, representatives of faculty members, representatives of parents, representatives of students belonging to the fresher's category as well as senior students, nonteaching staff; and shall have a diverse mix of membership in terms of levels as well as gender.

### **Functions of the Committee:**

The functions of the committee shall be as follows:

- i. To keep a vigil and stop the incidences of ragging, if any, to make the campus a ragging-free campus.
- ii. To educate the students at large by adopting various means about the menace of ragging and related punishment thereto.
- iii. An Anti-Ragging Squad, to be nominated by the Vice Chancellor, shall work under the committee for maintaining vigil, oversight and patrolling functions and shall remain mobile, alert and active at all times. Anti-Ragging Squad shall make surprise raids on hostels and conduct discreet random surveys amongst the freshers every fortnight during the first three months.
- iv. To submit an "Action Taken" Report in every quarter to the Registrar.

**Websites run by various agencies for anti-ragging and grievance Redressal activities:**

**Anti-Ragging Cell (UGC)**

The University Grants Commission (UGC) has established a toll-free Anti-Ragging Helpline (1800-180-5522) available in 12 languages, along with email support (helpline@antiragging.in), to assist victims and ensure coordinated action through a dedicated Call Centre and Anti-Ragging Cell. This cell, in collaboration with a Monitoring Agency and the Ministry of Education, actively follows up on cases to ensure victim satisfaction. UGC regularly issues advisories and circulars to educational institutions and state education departments, with notable ones released on 30.12.2021, 16.09.2022, 05.04.2022, and 23.05.2022. It conducts Inter Council meetings twice annually, the 14th of which was held on 12.04.2022, and coordinates Anti-Ragging Monitoring Committees. To streamline reporting, UGC has revised the online Anti-Ragging Affidavit process and directed institutions to prominently display contact details of Nodal Officers. A nationwide awareness campaign with posters, jingles, and film competitions is also planned. Additionally, the Anti-Ragging Cell handles daily administrative tasks, including RTIs, public grievances, legal matters, and inter-council coordination.

<https://www.antiragging.in/>

<https://rgu.ac.in/cell/internal-complaints-committee>

**Anti-ragging form**

[https://www.antiragging.in/affidavit affiliated form.php](https://www.antiragging.in/affidavit%20affiliated%20form.php)

**Anti-ragging complaint**

[https://www.antiragging.in/complaint register form.html](https://www.antiragging.in/complaint%20register%20form.html)

**Nearest police Station**

University Road, Doimukh, Arunachal Pradesh, 791112

Phone no : 0360227722

Superintendent of Police (SP) : Taru Gusar ( IPS)

## **PUBLIC GRIEVANCE CELL**

The University is monitoring and addressing the various grievances of different stakeholders and general public through its robust public grievances cell. The university grievance cell is working under the Centralized Public Grievance Redress and Monitoring System, which is an online web-enabled system over NICNET developed by NIC in association with the Department of Administrative Reforms and Public Grievances (DARPG) with an objective of speedy redress and effective monitoring of grievances by Ministries/ Departments/ Organizations of Government of India.

<https://rgu.ac.in/students-grievances-redressal-cell/>

<https://rgu.ac.in/cell/internal-complaints-committee>

**Ombudsman** is a confidential, impartial, and independent resource dedicated to assisting students, faculty, and staff in addressing concerns, complaints, or questions related to university policies, procedures, or conduct. Serving as a neutral party, the ombudsman provides a safe and private space where individuals can express their concerns without fear of retaliation. They help facilitate communication, mediate conflicts, and guide individuals in exploring their options within the university system. Additionally, ombudsmen can identify recurring or systemic issues and bring them to the attention of university leadership, potentially prompting policy improvements. By fostering a culture of fairness, accountability, and trust, university ombudsmen play a vital role in enhancing the learning and working environment for the entire academic community.

**Ombudsman** : Prof. K.S.R. Rao

**Email id** : ombudsman.sgrc@rgu.ac.in

### **SERVICES PROVIDED BY THE RAJIV GANDHI UNIVERSITY IN TIME BOUND FRAME:**

#### **STUDENTS:**

<b>SL NO.</b>	<b>SERVICE</b>	<b>AUTHORIZED OFFICER</b>	<b>TIME DURATION</b>
1.	Migration Certificate (New/ Duplicate)	Assistant Registrar (Registration)	5 working days
2.	Original Mark sheet	Controller of Examination	5 working days of online application
3.	Original Degree Certificate	Controller of Examination	5 working days
4.	Caution Money Return	Assistant Registrar (Finance)	Within 10 working days of application

**CITIZEN'S CHARTER**  
**Rajiv Gandhi University**

5.	Scholarships	Assistant Registrar (Finance)	4 working days of receiving the order from the concern branch
----	--------------	----------------------------------	---

NB: The time frame specified is for the normal decisions and the time frame may change as per the importance of the decisions and the issues involved.

**EMPLOYEES:**

SL NO.	SERVICE	AUTHORIZED OFFICER	TIME DURATION
1.	Medical Reimbursement	Assistant Registrar (Finance)	10 days of receiving of application
2.	Application forwarding for applying to other Universities/ Organizations / Departments	Registrar	7 days of receiving of application
3.	House Building Advance/CPF Advance	Finance Officer	10 days
4.	Children Education Allowance	Registrar	10 days
5.	TA/DA/LTC	Registrar	10 days

NB: The time frame specified is for the normal decisions and the time frame may change as per the importance of the decisions and the issues involved.

**PUBLIC RELATED CELLS AND CENTERS**

- i) **Community Development Cell:** Rajiv Gandhi University has established a Community Development Cell to integrate various community engagements efforts which are being taken up by various Departments and Centers. The Community Development Cell has adopted 5 villages under the Unnat Bharat Abhiyan namely; Poma, Disi, Lazu, Lachum, Patey and Chiputa. The Community development Cell is taking up various measures for improving livelihood status of the community of the adopted villages. Plantation programmes are also organized from time to time in the adopted villages where emphasis is given on plantation of fruit bearing trees which will augment their earnings. Awareness programs on health & hygiene, environment conservation, *Beti Bachao Beti Padoa*, *Vittiya Shaksharta Abhiyan* etc. are also being organized for the benefit of the community.
- ii) **University Technology Park:** The University technology park (Previously Women Technology Park) is poised to impart training and skill enhancement of the rural participants. A MoU has also been signed with National Council of Rural Institutes (NCRI) for collaborative community

**CITIZEN'S CHARTER**  
**Rajiv Gandhi University**

engagement works. Similarly, other institutes and Organizations which are working on rural development are also being pursued for collaborative approach

- iii) **Bal Vatika and Day Care facility:** A Bal Vatika for preprimary school at a minimum admission fee is run to cater to the needs of people of all sections. Day Care facility for children is also provided for all working parents, research scholars, guests and local community working parent in the vicinity of the University.
- iv) **Govt. Higher Secondary School:** One of the unique features of the Rajiv Gandhi University is the presence of a State Govt. Higher Secondary School within the campus catering to the educational needs and public services to 9 to 10 villages in the vicinity of the Campus.
- v) **Alumni Association of the University:** The University takes pride in the sea of alumnus and an alumni association of the University is in place. All the former students (alumni) and present employees and faculty members are its members and associate members. Association organizes social events/workshop/symposium and carries out academic publications. It provides a variety of benefits and services that help alumni maintain connections to its Alma mater. Significantly, the association supports new student during admissions through Helpdesks, etc.
- vi) **Bank & Post Office:** A branch of Bank of Baroda with ATM facility operates in the Administrative Block to meet the banking needs of the University community. An EDBPO (Sub-Post office), with speed post facility also functions in the university campus. One SBI ATM booth is also installed in the campus.
- vii) **Boxing Academy:** University runs a Boxing Academy for the budding pugilists of the campus and adjoining area. The academy is committed to talent search and nurturing.
- viii) **Canteen & Co-Operative Store:** A central canteen, a tea stall, a cafeteria, a Co-operative store, a Book stall, a Pharmacy, few stationery- cum-grocery shops and a salon in a shopping complex cater to the general needs of the University community. Photocopying facility is also available in the campus.
- ix) **Career Counselling Cell:** Established in 2011 under the UGC XI Plan programmes, the cell provides and extends support to the students in the development of soft skills and communication ability to challenge the rigors of competitive tests and on-job-training in add-on or vocational courses. The cell is in collaborations with SEBI & NSEIL, Kolkata.

**CITIZEN'S CHARTER**  
**Rajiv Gandhi University**

- x) **College Development Council:** The College Development Council provides a leadership role and extends help, guidance and advice to all the affiliated colleges admitted to the privileges of the University. The Council is the Principal Advisory Body to the Executive Council and the Academic Council in all matters relating to affiliation. It is constituted comprising representatives from university officials, faculty members, a representative of the State Government, principals and teachers of affiliated colleges. It provides a forum for taking measures for continuously improving the general educational standards of the affiliated colleges. The Council functions as the liaison between the affiliated colleges and the University Grants Commission in forwarding various proposals of colleges to the UGC for obtaining funds under the different schemes for the overall development of colleges.
- xi) **Community College:** Community College, RGU was established in the year 2015 following the 12th Five Year Plan recommendation. The UGC has initiated the innovative scheme for setting up of Community Colleges in Universities and Colleges for expansion of skilled-based programmes in higher education to serve the multiple needs, with an objective to provide career oriented cum skill based programme. Currently, Community College, RGU is running one year diploma in computerized accounting.
- xii) **Community Drinking Water Centre:** for provision of clean and hygiene drinking water at a price of Rs. 1 per liter.
- xiii) **EDUSAT Centre (National Network):** Year of Establishment: 2005, Sponsoring Agency: UGC-CEC, Location: Department of Geography. Regular classes taught through multicast by CEC for various subjects especially on Development Studies, Mass media, Career Counselling, Hindi, Health, Environment Studies, Economics, Information Communication Technology, Sociology, Public Relation, Education, Political Science & Geography were received at the EDUSAT and routed to Campus LAN. Some important lectures were recorded as archival material in the EDUSAT Server. The programme is also simultaneously telecast through DTH (Dish TV Channel 772). Teaching end has been upgraded with better media capability and Train Net Software for two way interaction with the resource person. Beside, EDUSAT (State Network) was also established in the University with sponsorship from ISRO, which with its Hub station carry out multicasting of recorded educational programmes of DECU, ISRO on regular basis.
- xiv) **Health Centre:** A four bedded Health Center is operational with two experienced medical officers, three nurses, technicians and a pharmacist. Soon it shall be upgraded to a 14-bedded one with modern medical equipment and facilities. 24 hours Ambulance facility for any emergency is available round the clock.

**CITIZEN'S CHARTER**  
**Rajiv Gandhi University**

- xv) **Innovative Centre:** Innovative centre has been set up in the University with a humble motive to accelerate the overall development of university community towards transforming their lives economically, socially and physically by identifying their talents/ skills and further training them through awareness and skill development programmes. Economically viable areas such as cultivation of mushroom, vegetables, and weaving have been tried in the park.
- xvi) **Institute of Distance Education:** To make higher education for all a reality, the Rajiv Gandhi University has been offering distance education programmes duly recognized and approved by the Distance Education Council (DEC), New Delhi in both Bachelor and Master Degree levels. BA programmes in five subjects namely Economics, Education, English, History and Political Science was started in 2005-06. Subsequently, other subjects namely Hindi, Sociology, and Tribal Studies besides two certificate courses: 'Certificate Course in Fisheries Technology' and 'Certificate Course in English for Communication' have been introduced. M. A. programmes in Education, English, Hindi, Political Science and History have also been introduced. In recent times, IDE has embarked on the road of using ICT for distance learning with its main objective of providing opportunities to aspiring youths of the state for vocational and higher education. IDE has a state-of-art conference hall equipped with smart class. It has also undertaken the 'Women Technology Park' which was originally sanctioned by the Department of Science and Technology, GOI. The park is being developed to function as a centre for vocational training. Currently, Organic vegetable gardening, bee-keeping, mushroom cultivation and vermicompost production are under way.
- xvii) **National Service Scheme (NSS):** Rajiv Gandhi University is running various community developmental works through its NSS unit with the broad objective of personality development through community service. Every year volunteers who enrol themselves in NSS cell are provided orientation programme and regular activities like tree plantation, blood donation camps, cleanliness drive in the campus etc. organized from time to time. The NSS special programmes in the adopted villages and adventure activities are also organized from time to time. Recently a course on NSS and Youth Development has been introduced as an open elective subject.
- xviii) **Physical Education Branch:** The Physical Education Branch was set up in 1999 to conduct programmes and activities for all round development of the students' personality. The branch conducts/organizes Sports, Cultural, Youth Affairs and Students' Union activities, etc. the Infrastructure Facility and Equipment are: Football Ground cum Track & Field (International Standard Size) : 3 Nos, Volleyball Court: 3 Nos., Basketball Court: 1 No., Badminton Court: 5 Nos., Auditorium (Multipurpose): 2 Nos.

**CITIZEN'S CHARTER**  
**Rajiv Gandhi University**

- xix) **Right to Information (RTI) Cell:** A RTI Cell is functional in the University with the Registrar as its Appellate Authority. One Nodal Officer, One CPIO and an Asstt. CPIO is attached to the cell for timely clearance of applications.
- xx) **The University Library:** The central Library of the University is functioning in a separate building, since 1998. The total number of books as on today is 63576 out of which approx. 3000 books are reference nature and approx. 2000 gifted books. The University Library subscribes 14 local, regional and national dailies & 15 numbers of magazines. University Library also subscribes 15 International Journals and 75 National Print Journals. The University Library is registered / enrolled as an Institutional Member of Developing Library Network (DELNET), New Delhi, which is a major Digital Library Resource in South Asia. There is a separate cell to facilitate for internet browsing for the students, research scholars and faculties. They can browse and access more than 9000 plus E- journals full text online under *Sodh Sindhu* Library consortium and Developing Library Network (DELNET) the major Digital Library Resource in South Asia extended to the readers. (OPAC) online public access catalogue facility can be accessed by IP: 10.1.0.201. There is separate section for Text-Books, current Periodicals, dissertations (195 nos.) and Thesis (244 nos.) are on display, as well on database. The circulation through Kiosk from Smart Card RFID system is functional. ETD (Electronic Thesis & Dissertation) and Digitized rare books on Arunachal and E-Books are also available. The central library of the University also organizes Workshops, Training and orientation programmes on Library related fields such as Automation, User education, etc. The library remains open from 9AM to 7PM on all working days.
- xxi) **Transport Facilities:** The University extends adequate bus services from the Campus to Nirjuli, Naharlagun & Itanagar for students and staff at concessional rates. Frequent bus services are provided to NERIST point in Nirjuli on National Highway 52-A, from where public transport facility can be easily availed.
- xxii) **University Industry Interface Cell (UIIC):** Established in the year 2014, this cell is first of its kind in the entire North East, and is functional from the Department of Management. The cell is playing its part in bringing industries closer to the University community.
- xxiii) **V-SAT Facility:** VSAT Facility, established in the year 2000 has been extending its services to the university with constant upgradation of its services since its inception. Internet access facility which is an essential service to the university is being monitored and maintained by the facility. Campus-wide Local Area Network (CLAN) of the university which is the core infrastructure in enabling sharing of resources and flow of information within and outside the University has been constantly expanding as the

main facilitator of all the IT enabled services. Rajiv Gandhi University, being one of the member institutes of National Knowledge Network (NKN)- a state-of-the-art multi-gigabit pan-India network for providing a unified high speed network backbone for all knowledge related institutions in the country, has laid down the timeline for the commissioning of the NKN 1gbps link. Soon the University would be actively participating in the areas of content generation and resource sharing from its pool. This would enable the university to showcase the knowledge base available with the university. Besides being the member of consortiums like DeLCON, INFLIBNET, the university has got privileges to access several globally renowned e journals. VSAT Facility would very soon be introducing mail and messaging services as part of the e-governance initiatives, creating wireless hotspots, application repository and various other intranet services. VSAT Facility also provides internet connectivity through a 2mbps leased line link and 1mbps DAMA VSAT link from ERNET India, New Delhi. Both the links supplement each other in case of failure of one thereby rendering 24/7 internet access to the university community. 1gbps connectivity under NKN has already been extended to the university by National Informatics Centre (NIC), Itanagar using the leased line circuit from BSNL.

- xxiv) **Women Studies and Research Centre (WS&RC):** Established on 5th September, 2009 under the UGC XI Five Year Plan, it functions as an independent multi-disciplinary centre. The centre conducts research activities, seminars, symposiums, awareness camps and capacity building programmes.
- xxv) **Central Instrumental Facility (CIF) :** Considering that the individual researchers often face challenges in securing substantial funding for high-end instruments, RGU established the Central Instrumental Facility (CIF) in the year of 2022 serves as a state-of-the-art platform for advanced research and scientific exploration across various disciplines. Equipped with high-end analytical instruments such as HPLC, GC-MS, FTIR, UV-Vis spectrophotometer, Atomic Absorption Spectroscopy, and other precision equipment, the facility supports interdisciplinary research in basic, applied, life, and environmental sciences. The CIF promotes academic excellence by providing hands-on training and access to cutting-edge instrumentation for faculty members, research scholars, and students. It significantly enhances the quality of research by enabling accurate analysis, characterization, and quantification of complex samples. The facility is managed by a team of trained technical staff and operates under standard protocols to ensure reliability and reproducibility of results. By fostering collaborative research within and outside the university, the CIF plays a vital role in strengthening the institution's research ecosystem and provide centralized access to sophisticated instruments for advanced research

across science disciplines, thus aligning with national and global scientific goals.

xxvi) **Skill Hub Centre**

The NABARD-assisted Rural Business Incubation Centre at Rajiv Gandhi University (RuBIC, RGU) in Doimukh was established through a collaboration between the National Bank for Agriculture and Rural Development (NABARD) and RGU. Its primary goal is to promote impactful start-ups by creating a supportive entrepreneurial ecosystem for the youth in rural areas. RuBIC RGU stands out as one of Arunachal Pradesh's pioneering incubation centres focused on directly assisting agricultural and rural start-ups. Nestled in a tranquil and verdant campus, the centre offers a peaceful learning environment, away from the noise and pollution of urban centres. In a significant step towards fostering entrepreneurship and self-reliance in rural areas, the inauguration of the Rural Business Incubation Centre (RuBIC), Rajiv Gandhi University (RGU), Doimukh, Arunachal Pradesh was held on 23.04.2025. The event was graced by Hon'ble Chief Guest, Shri Gabriel Denwang Wangsu, Hon'ble Minister of Agriculture, Horticulture, etc., Government of Arunachal Pradesh, who officially inaugurated the centre by unveiling the plaque in the presence of Prof. S. K. Nayak, Hon'ble Vice-Chancellor (Acting), RGU; Shri Damodar Mishra, GM, NABARD; Dr. N. T. Rikam, Registrar, RGU; Prof. Otem Padung, Finance Officer, RGU; Dr. Sandeep Janghu, Dean (i/c), FAsc, RGU; Dr. Arindam Barman, Nodal Officer & Programme Coordinator, RuBIC, RGU and other distinguished guests, including government officials, academic leaders, faculty members, industry representatives, and local entrepreneurs. The establishment of RGU RuBIC aims to enhance and strengthen the start-up landscape in the agriculture and rural sectors, which hold the potential to significantly improve the lives of rural communities. RuBIC seeks to position itself as a key catalyst for rural development by fostering entrepreneurship, making it the first of its kind in Arunachal Pradesh. The objective of the centre is to discover, support, and incubate start-ups and enterprises by offering numerous opportunities and the appropriate platform for ideation, innovation, and business enhancement through mentorship, funding, and comprehensive business assistance.

Pradhan Mantri Kaushal Vikas Yojana (PMKVY) is the flagship scheme of the Ministry of Skill Development and Entrepreneurship (MSDE) implemented by National Skill Development Corporation (NSDC). The objective of this Skill Certification scheme is to enable Indian youth to take up industry relevant skill training that will help them in securing a better livelihood. With an aim to empower country's youth and continue the journey of Skill India Mission in building India as the skill capital of the world, the Ministry of Skill Development and Entrepreneurship (MSDE) launched the third phase of its flagship scheme — Pradhan Mantri Kaushal Vikas Yojana (PMKVY 3.0) on

**CITIZEN'S CHARTER**  
**Rajiv Gandhi University**

15 January 2021. PMKVY 3.0 aims to encourage and promote skill development throughout the country to address industry needs, meet market demands and impart skills in services and in new-age job roles that have become crucial with the advent of COVID-19 pandemic. The scheme aims to benefit over eight (08) lakh candidates in FY 2020-2021 with a budget of INR 948.90 crores while targeting the youth under the age group of 15-45 years. The scheme have two components — Central Component to be implemented by National Skill Development Corporation (NSDC), Directorate General of Training (DGT) and other agencies of the Central Ministries and the State Component to be implemented by State Skill Development Missions (SSDMs)/respective Departments of the States/UTs.

The focus of PMKVY 3.0 (2020-21) has been shifted from supply-based approach to demand-based approach. In the wake of disruption caused by COVID-19 and resultant impact on livelihood, the scheme (PMKVY 3.0) will give major focus on upskilling/reskilling with a focus on future skills (industry 4.0) courses to increase productivity of existing workforce and provide online/digital mode of training for wider coverage. Skill training will be imparted under three categories, pan-India: (1) Short Term Training (STT), (2) Recognition of Prior Learning (RPL), and (3) Special Project (SP) Ministry of Skill Development and Entrepreneurship (MSDE) in consultation with Ministry of Education (MoE) has planned to implement the 'Skill Hub Initiative' under Pradhan Mantri Kaushal Vikas Yojana 3.0 (PMKVY 3.0). Scheme aims to facilitate and make education more relevant and create industry fit skilled workforce.

The 'Skill Hub Initiative' under the PMKVY 3.0 scheme shall focus on the introduction of skill training programmes in the education ecosystems. Initiative shall consider the policy level synergy on integration of vocational education with general education as envisioned in the 'National Education Policy 2020'. The effort shall supplement the objectives of 'National Policy for Skill Development and Entrepreneurship, 2015'. In view of the above, successful integration of skilling with education will require support and synergy from every stakeholder(s) such as MoE, MSDE and other central Ministries/Departments including Higher Education Institutions (HEIs). The 'Skill Hub Initiative' shall be implemented under Central component of PMKVY 3.0 through National Skill Development Corporation (NSDC) and support of State Education Department/ Agencies. The implementation of the initiative shall ensure broad-based convergence of vocational education with formal education in a phased manner to achieve outcomes with speed and standard.

In pursuance to the discussion with Ministry of Skill Development and Entrepreneurship on 4th March, 2022, a committee was constituted through vide notification No. RGU/REG-45/AC/21 dated 4th March, 2022 with regard to offer Skill Development Courses regarding Skill Hubs Initiatives (SHI)

**CITIZEN'S CHARTER**  
**Rajiv Gandhi University**

under Pradhan Mantri Kaushal Vikas Yojana (PMKVY) 3.0. Subsequent to that Skill Hub Centre at Rajiv Gandhi University was established in the month of March, 2022. The Centre has offered two courses namely - CCTV Installation Technician and Technician - Paper Bag Manufacturing in very short span of time. The learners of first batch from both the courses have been successfully completed the programme.

**RULES AND REGULATION: LIBRARY USAGES** Rajiv Gandhi University (formally Arunachal University) is the premier institution for higher education in the state of Arunachal Pradesh and has completed 32 (thirty-two) years of its existence. Late Smt. Indira Gandhi, the tenth prime minister of India laid the foundation stone of the university on 4th.Feb1984.The Central Library was established with short number of books in the year of foundation of the University. The Central library is the hub of all academic activities providing access to knowledge and information to the University community. Its two storage building has spacious reading halls and compact stack area. Presently the Library holds 64,400 nos. of books and subscribes various national and international journals. The library also provides access to the different online journals under various consortiums from which more than 10,000 e- journals, full text article may be browsed and downloaded. The Library also subscribes 17 daily newspapers and 10 reputed magazines. The total of 343 Ph.D. thesis and 353 dissertations are displayed in the separate section for consultation. The Library is using open source library management software KOHA and implemented RFID technology for its smooth functioning of circulation operations and theft detection. The Central Library serves its users from 9.00A.M. to 7.00 P.M. in all working days.

Web Link: <https://rgu.ac.in/facility/library>

- Library Membership Form
- Students are notify to collect smart card Application Form
- Rules and Regulations of Central Library

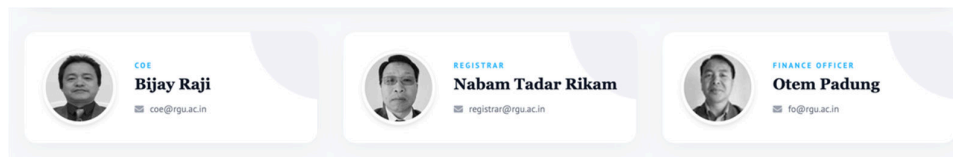
**RULES & REGULATIONS OF THE CENTRAL LIBRARY**

- 1) The bona fide students are those, who have taken admission in this University, regular faculty members, research scholars (PhD./M.Phil), regular staff members of the University are allowed to use the Library.
- 2) During their visit to the Library, users have to deposit their bags and belongings in the property counter.

- 3) The Library users have to sign in the visitor's register at the entrance.
- 4) The Library membership **Smart Card** will be provided to the user after filling up of prescribed membership form.
- 5) The Library **Smart Card** provides five (5) books for one month to the students, five (5) books for the research scholars for two months, fifteen (15) books for the Faculty members for three months and five (5) books to the staff members for one month which are renewable (two times) on or before the due date .
- 6) A fine of Rs. 1.00 per day per book will be imposed if the user fails to return the borrowed book on/before the due date.
- 7) The Library **Smart Card** is not transferable.
- 8) The Library timing is 9.00A.M. to 5.00 P.M. in all working days.
- 9) The Library is under surveillance of CCTV camera. If any user found mutilating or unauthorized lending (stealing) of books/documents then his/her membership will be cancelled and proper action will be taken. Marking, folding of books are strictly prohibited.
- 10) If any user lost Library books has to be replaced or pay the cost with fine as per decision of the Library Committee.
- 11) Text books, Reference books, Journals, Newspapers and Magazines, Thesis and Dissertations are not for issue. Photocopy of Thesis and Dissertations are not allowed.
- 12) The users are not allowed to shelve the books on the racks by themselves.
- 13) Cell phones are allowed either in silent or switched off mode inside the Library.
- 14) Readers are advised to keep silence in the Library.
- 15) Outside readers will be allowed to use the Library on permission of the Librarian only.

## Directory of Officers and Employees

**Name and Designation, Telephone, Fax and Email ID:** Information about the name and designation of the officers and employees with their contact details are available on the university website:



<https://rgu.ac.in/#>  
<https://rgu.ac.in/statutory-officers>  
<https://rgu.ac.in/cell/right-to-information-cell>  
<https://rgu.ac.in/cell/students-grievances-redressal-cell>  
<https://admissions.rgu.ac.in/>  
<https://rgu.ac.in/info/employee-details>

### Contact Details

Sl. No.	Name	Designation	Email Address
1.	Dr. Nabam Tadar Rikam	Registrar	registrar@rgu.ac.in
2.	Prof. Otem Padung	Finance Officer	otem.padung@rgu.ac.in
3.	Dr. Bijay Raji	Controller of Examinations	bijay.raji@rgu.ac.in
4.	Dr. Nani Tamang Jose	Joint Registrar	nani.jose@rgu.ac.in
5.	Dr. David Pertin	Joint Registrar	david.pertin@rgu.ac.in
6.	Mr. Hage Kojee	Assistant Registrar	hage.kojee@rgu.ac.in
7.	Mr. Gomar Basar	Assistant Registrar	gomar.basar@rgu.ac.in
8.	Ms. Oriental Taggu	Assistant Registrar	oriental.taggu@rgu.ac.in
9.	Mr. B.K. Shah	Executive Engineer	basant.shah@rgu.ac.in
10.	Mr. Tsering Dorjee Megeji	Joint Director (Computer Centre)	tdmegeji@rgu.ac.in
11.	Mr. Solung Sonam	Deputy Registrar	solung.sonam@rgu.ac.in
12.	Ms. Gumpi Nguso	Hindi Officer	gumpi.nguso@rgu.ac.in
13.	Mr. Badal Techhi	Sr. Security Officer	badal.techhi@rgu.ac.in

**CITIZEN'S CHARTER**  
**Rajiv Gandhi University**

Sl. No.	Name	Designation	Email Address
14.	Dr. Akin Tana Tara	Chief Medical Officer	akin.tana@rgu.ac.in
15.	Dr. (Mrs.) Chin Dei Kim	Chief Medical Officer	chin.kim@rgu.ac.in
16.	Mr. Munnalal Sharma	Section Officer	munna.sharma@rgu.ac.in
17.	Mrs. Nabam Kako (Yowa)	Section Officer	nabam.kako@rgu.ac.in
18.	Mr. Nich Bapu	Section Officer	nich.bapu@rgu.ac.in
19.	Mrs. Kenpu Nyori	Section Officer	kenpu.nyori@rgu.ac.in
20.	Mrs. Rupa Pomoung	Section Officer	so.teaching@rgu.ac.in
21.	Mr. D. Bhattacharjee	Section Officer	debojit.bhattacharjee@rgu.ac.in
22.	Mr. Alip Roy	Section Officer	alip.roy@rgu.ac.in
23.	Mrs. Tutumoni Deb (Baruah)	Section Officer	tutumoni.deb@rgu.ac.in
24.	Mrs. Nabam Aroti	Section Officer	nabam.aroti@rgu.ac.in
25.	Mr. Abu Lego	Estate Officer	abu.lego@rgu.ac.in
26.	Mr. Taw Teri	Junior Engineer	taw.teri@rgu.ac.in
27.	Mr. Biri Rana	Junior Engineer	biri.rana@rgu.ac.in

Available at:

<https://rgu.ac.in/rgu-profile>

<https://rgu.ac.in/info/employee-details>

<https://rgu.ac.in/statutory-officers>

<https://rgu.ac.in/reach-rgu>

<https://rgu.ac.in/cell/right-to-information-cell>

<https://rgu.ac.in/academic-council>

<https://rgu.ac.in/executive-council>

<https://rgu.ac.in/finance-committee>

<https://rgu.ac.in/college-development-council>

<https://rgu.ac.in/university-court>

<https://rgu.ac.in/advisory-committee>

**Prepared by:**

- 1. Prof. Sanjeeb Kumar Jena, Professor, Dept. of Commerce**
- 2. Dr. Ravi Ranjan Kumar, Asst. Professor, Dept. of Social Work**
- 3. Dr. Deependra Rajoriya, Asst. Professor, Dept. of Food Technology**
- 4. Dr. Devegowda S R, Asst. Professor, Dept. of Agriculture Economics**
- 5. Dr. Samikhya Bhuyan, Asst. Professor, Dept. of Soil Science and Agricultural Chemistry**
- 6. Dr. Jyoti Jaiswal, Asst. Professor, Dept. of Physics**
- 7. Ms. Oriental Taggu, Asst Registrar**

\*\*\*\*\*



**RGU SHINES**  
**RANKED 13TH AMONG**  
**CENTRAL UNIVERSITIES IN INDIA**  
*in the Latest Indian Institutional Ranking Framework*  
**ACCREDITED "A" GRADE BY NAAC**