

Rajiv Gandhi University has been offering Distance Education Programmes through the Centre for Distance Education established in 2005. The Centre has been renamed as Institute of Distance Education (IDE).

The Institute of Distance Education, Rajiv Gandhi University intends to fulfil the constitutional obligation in terms of access, equality and provision of Quality Higher Education to everyone.

Board of Management

Prof. Saket Kushwaha	:	Vice Chancellor	-	Chairman
Dr. N. T. Rikam	:	Registrar	-	Member
Dr. Bijay Raji	:	Controller of Examination	-	Member
Prof. Elizabeth Hangsing	:	Department of Education	-	Member
Prof. Tomo Riba	:	Department of Geography	-	Member
Prof. Oken Lego	:	Department of Hindi	-	Member
Moyir Riba	:	Assistant Professor, IDE	-	Member
Prof. Ashan Rididi	:	Director, IDE	-	Member Secretary

1. Introduction

The formal system of higher education in our country is facing the problems of access, limitation of seats, lack of facilities and infrastructure. Academicians from various disciplines opine that it is learning which is more important and not the channel of education. The education through distance mode is an alternative mode of imparting instruction to overcome the problems of access, infrastructure and socio-economic barriers. This will meet the demand for qualitative higher education of millions of people who cannot get admission in the regular system and wish to pursue their education. It also helps interested employed and unemployed men and women to continue with their higher education. Distance education is a distinct approach to impart education to learners who remained away in the space and/or time from the teachers and teaching institutions on account of economic, social and other considerations. Our main aim is to provide higher education opportunities to those who are unable to join regular academic and Vocational education programmes in the affiliated colleges of the University and make higher education reach to the doorsteps in rural and

geographically remote areas of Arunachal Pradesh particular and North-eastern part of India in general. In 2008, the Centre for Distance Education has been renamed as "Institute of Distance Education (IDE)." Continuing the endeavour to expand e-learning opportunities for distant learners, IDE has introduced Post Graduate Courses in 5 subjects (Education, English, Hindi, History and Political Science) from the Academic Session 2013-14 and Economics & Sociology from the Academic Session-2018-19. Subsequently a Post Graduate Diploma in Mass Communication and other certificate courses also have been introduced in the University.

2. General Information

2.1 Profile of the University

Rajiv Gandhi University (formerly Arunachal University) has been endeavouring since its inception in 1984 to play a positive role in the socio-economic development of Arunachal Pradesh through research, education, training and extension. Towards realising these objectives, the University has been introducing relevant courses both at undergraduate and post graduate levels. The University has achieved a lot. For example, in 2002, UGC has identified Arunachal University as one among the select group of twelve Universities with potential for excellence in Bio-Diversity out of ninety competing Universities. The University was assessed and accredited in 2002 by the National Assessment and Accreditation Council (NAAC) and is placed in 'B' grade on the basis of its performance in academic, research and governance. The students from interior villages and from the background of poor economic conditions cannot access higher education even though the Arunachalee students get stipends to pursue their education. It is in this context that the need for distance education in Arunachal Pradesh cannot be over emphasised. Realizing its importance, Rajiv Gandhi University has been offering distance education programme at undergraduate level and started B.A.1st year in five subjects namely Economics, Education, English, History and Political Science from the session 2005-06. During the session 2006-07, two more subjects namely Hindi and Sociology have been added to its undergraduate programme. During the session 2007-08, one more subject namely Tribal Studies has been added to its undergraduate programme in addition to two certificate - courses namely 'Certificate Course in Fisheries Technology' and 'Certificate Course in English for Communication' have also been introduced in the same session. Subsequently Certificate Courses in 'Cyber Security', 'Introduction to Mobile Architecture', 'Barefoot Wireless Engineers', 'Digital Video Editing', 'Japanese Language' and Diploma in 'Multimedia Animation' were also introduced. These courses have been recognized and approved by the Distance Education Council (DEC), New Delhi.

An Expert Committee from the DEC visited the Centre in November 2005 and evaluated infrastructural facilities, availability of course materials, details of delivery mechanisms, provisions of students support, library facilities etc. The self-learning course materials are prepared with subject experts and evaluated by a team of experts at the DEC, New Delhi. The main objective is to provide opportunities to aspiring youths of the state for higher education. The University has been elevated to a Central University on 9th April, 2007. The latest approval by UGC was granted to the institution in the year 2021. The institution has been granted permission to run its distance mode courses up to the year 2026.

2.2 Profile of the Institution

Location of Institute of Distance Education:

Surrounded by well managed varieties of seasonal and annual flowering plants the Institute of Distance Education is housed in the Mathematics and IDE building (first floor) next to the University Library. The University campus is 6 kms from NERIST point on National Highway 52A. The University buses ply to NERIST point regularly.

VISION:

Institute of Distance Education being the premier and lone institute of open and distance learning mode in the state aspire to be most vibrant, energetic, responsive and reliable institute in providing opportunities to aspiring youths, employed and unemployed men and women of the state to continue with their higher education without any hindrances.

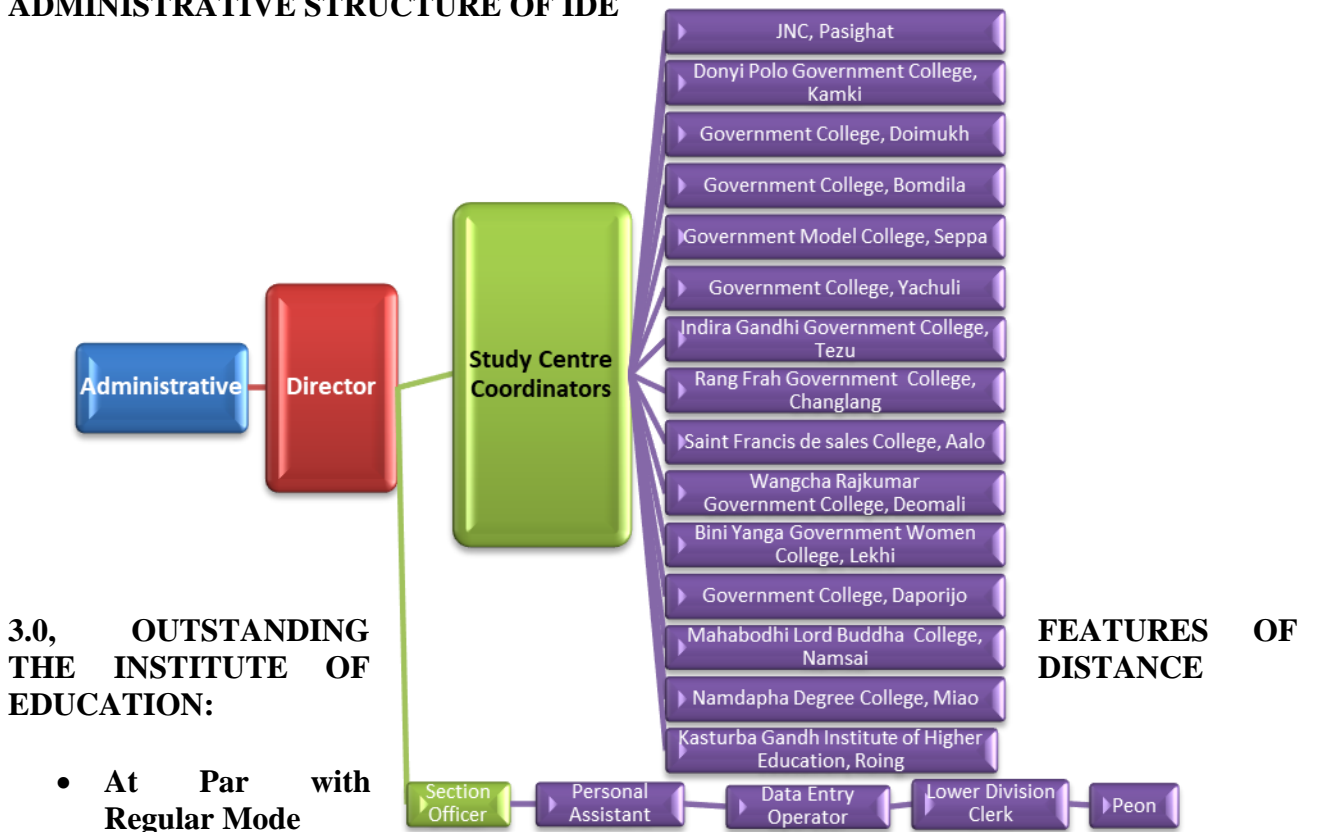
MISSION:

To provide higher education opportunities to those who are unable to join regular academic and vocational education programmes in the affiliated colleges of the University or in the university.

To make higher education reach to the doorsteps in rural and geographically remote areas of Arunachal Pradesh in particular and North-eastern part of India in general.

To set the highest benchmark for quality and standards in education sector through open and distance learning mode.

ADMINISTRATIVE STRUCTURE OF IDE



Eligibility requirements, curricular content, mode of examination and the award of degrees are at par with the colleges affiliated to the Rajiv Gandhi University and the Department(s) of the University.

- **Self-Instructional Study Materials (SISM)**

The students are provided SISM prepared by the Institute and approved by Distance Education Council (DEC), New Delhi. This is provided at the time of admission at the IDE or its Study Centres, SISM is provided only in English except Hindi subject.

- **Contact and Counselling Programme (CCP)**

The course curriculum of every programme involves counselling in the form of personal contact and counselling programme of duration of approximately 7-15 days. The CCP is not compulsory for BA. However for professional courses and MA, the attendance in CCP is mandatory.

- **Field Training and Project**

For professional course(s) there is a provision of field training and project writing in the concerned subject.

- **Medium of Instruction and Examination**

The medium of instruction and examination is in English for all the subjects except for those subjects where the learners are needed to write in the respective languages.

- **Subject/Counselling Coordinators**

For developing study material, the IDE appoints subject coordinators from within and outside the University. In order to run the PCCP effectively, Counselling Coordinators are engaged from the Departments of the University. The Counselling-Coordinators do necessary coordination for involving resource persons in contact and counselling programme and assignment evaluation. The learners can also contact them for clarifying their difficulties in their respective subject.

- **Adoption of villages**

The XXXI meeting of the Board of Management (BOM) was held in February 2019 at IDE, Rajiv Gandhi University approved to adopt 11 villages. Accordingly, the Institute adopted 11 rural villages like, Tun, Longlung, Sera, Ruyi, Ayeng, Model, Darka, Jeram, etc. under Unnat Bharat Abhiyan (the mission of Unnat Bharat Abhiyan is to enable higher educational institutions to work with the people of rural India in identifying development challenges and evolving appropriate solutions of accelerating sustainable growth) and it was also approved that if any villagers volunteer or is engaged for the matter then the person would be issued with a certificate. .

- **Free education to the Jail in-mates**

The BoM's also approved to extend support centre for those jail inmates to undergo higher education by setting up study centers and headquarters enabling them to write their examinations while in custody. Since, Donyi Polo Mission School for Visually and Hearing Impaired, Itanagar is the only institute in the state to offer education for the differently abled students, the board also decided to extend free education to those students by the IDE, RGU.

- **Water Management**

Rainwater harvesting to accumulate and storage of rainwater for reuse onsite rather than allowing it to run-off is a well-known system for water conservation. Its main purpose is to use the locally available rainwater to meet water requirements throughout the year without the need of huge capital expenditure. The need to capture, store, filter and reuse rainfall is becoming more and more important. Coupled with demand for reducing environmental

impact, rainwater harvesting is increasingly sought after in the university campus. Rainwater harvesting system, as an acceptable water resource management method, can be considered as an alternative method in the Rajiv Gandhi University campus and the campus dwellers are facing scarcity of water. Considering the above facts, Rajiv Gandhi University have started with Rainwater harvesting system in two departments, namely, Institute of Distance Education and Computer Science building.

- **Incubation and Innovation Centre**

The Incubation and Innovation Centre (then Women Technology Park at Rajiv Gandhi University) was established in 2011 under the UGC XIth Plan. It was established to act as a foundation for promoting and popularization of improved technologies in some of the activities where women are engaged for earning of their livelihood; It serve as a platform for technological information pool, documentation and highlight of issues related to women's technological needs and also to upgrade indigenous knowledge/technology prevalent in the state. The park also makes an attempt to revive and popularize following indigenous knowledge systems through the intervention of science and technology. Mushroom Cultivation, Sericulture and modified loom, cultivation of wild vegetables of Arunachal Pradesh, Bio and vermi-composting, seasonal vegetables, etc. were given preferences.

- **Paper Re-cycling unit**

As part of its quest for innovative projects for all-round development of the university, Rajiv Gandhi University also has approved a project for establishing a paper recycling unit in its campus.

- The institution holds the distinction of being one of the only four distance learning institutions in the North East India to have been approved by the UGC.

CELLS IN THE INSTITUTION

Centre for Internal Quality Assurance Cell

As per the Regulation of University Grants Commission, 2017, the Institute of Distance education, Rajiv Gandhi ooty has created Centre for Internal Quality Assurance Cell Centre for Sternal Quality Astul on 07th December, 2018 to conduct institutional compliance and quality audite and to centre for infemal internal quality assurances ence and best-in-class quality assurance. The main objective of is to develop and put in place a comprehensive and dynamic provide high quality programme of higher eduction in the open and distance learning mode remembers were constituted for CIAQ cell of Institute of Distance Education;

Prof. Saket Kushwaha	: Vice Chancellor, RGU	- Chairman
Pro-Vice Chancellor, RGU		- Member
Prof. Tana Showren	: Department of History, RGU	- Member
Prof. S. K. Chaudhuri	: Department of Anthropology, RGU	- Member
Prof. C. R. K. Murthy	: STRIDE, IGNOU, New Delhi	- External Member
Dr. Ankuran Dutta	: Former Associate Professor, KKHSU	

	Former Programme Officer, CEMCA	- External Member
Dr. Manoj Tirkey	: Regional Director, IGNOU, Regional Centre, Itanagar	- External Member
Registrar	: RGU	- Member
Finance Officer	: RGU	- Member
Controller of Examination	: RGU	- Member
Moyir Riba	: Assistant Professor, IDE	- Member
Prof. Ashan Rididi	: Director, IDE	- Member Secretary

Institute of Distance Education Alumni Association (IDEAA)

The "INSTITUTION OF DISTANCE EDUCATION ALUMNI ASSOCIATION" (IDEAA) Rajiv Gandhi University is being established as per the University Grants Commission notification, 2017, with the aim of keeping in touch with the past learners of the institution from across the state and with a avidity of strong of giving to the society. The Alumni are a strong support to any academic institution. An active participation of the alumni is a reflection of the bond between the learner and the institution. The association also aims to facilitate them to contribute significantly to the development of the institution and thus for the growth of a healthy society. The need for an alumni association is more essential as most of the learners are in-service.

The association provides for the posts of President, Vice-President, General Sec Assistant General Secretary, Treasurer, 8 Executive members for the tenure of 3 (three) year. The association will conduct meeting annually. To strengthen the IDEAA from within and to ensure its proper functioning and fulfilment of its aims and objectives, the Internal Alumni Committee was formed.

The institution is proud to have so many alumni who are contributing in different fields to the society and the nation. We have alumni who are teachers, advocates, police personals, entrepreneurs' social workers, engineers, nurses etc. Any student who has passed out from the Institution is an alumnus or alumna and can be a member of the IDEAA by providing their prescribed enrolment number and a membership fee of Rs.50 only. Alumni who wish to join the Association can do so by registering themselves by visiting the institution or logging in to the institution's website.

The Institute of Distance Education (IDE), Rajiv Gandhi University is running under the strict vigils of the Board of Management (BoM) which is headed by the Vice-Chancellor, Rajiv Gandhi University as Chairman. The BoM consists of two organs i.e., Academic and Administrative.

The Academic organ of the institute constitutes of Board of Studies (BoS) consisting of the Department of English, Hindi, History, Education, Economics, Political Science and Sociology. Further, the subject-wise BoS is comprised of the Head of the Department as a Chairman, subject coordinator and subject faculty in IDE, experts of the concerned department and at least one external expert from other Universities.

The Administrative organ of IDE on the other hand is headed by the Director while the management is done with the help of its supporting staffs viz., 07 (seven) Faculty members of the concerned subjects and seven subject coordinators and two councillors for each subject, Section Officer, Personal Assistant, Lower Divisional Clerk, Data Entry Operator, and Peon etc.

INTERNAL QUALITY ASSURANCE CELL (IQAC):

UGC in the XI Plan made a policy decision that all higher educational institutes may establish Internal Quality Assurance Cell (IQAC) to maintain the momentum of quality consequences. IQAC was conceived as a mechanism to build and ensure a quality culture at the institutional level. The IQAC is meant for planning, guiding and maintaining Quality Assurance (QA) and Quality Enhancement (QE) activities of the institution. The IQAC is functional with Vice Chancellor as the Chairman, eight senior faculty members, one administrative officer and three external experts. Institute of Distance Education being one of the branch departments of RGU is integrated with IQAC, RGU

GRIEVANCES REDRESSAL CELL:

The Institute of Distance Education has "Grievances Redressal Cell "which was established on 09th February, 2019 with an accordance to the Open and Distance Learning Regulation 2017 under the University Grant Commission. The cell was established to resolve the grievances of the learner within a stipulated time frame. The cell has consisted of two branches an academic grievances cell and the administrative grievances cell which works on their respective jurisdiction. All the study centre of the Institute of Distance Education also has a grievance cell which followed the structure and functioning of the HQ and the grievances cell is headed by the Principal and Coordinator of the respective college. At the centre the flowing member constituted the cell.

1. Ms Moyir Riba, Chairman -9402255510
2. Dr. Nyajum Lollen, Member -9402075890
3. Dr. Lige Sora - 9402470883
4. Dr. Saurav Mitra –9863895834
5. Ms. Tunung Tabing - 9862438820
6. Ms. Chathiam Lowang - 8415911642
7. Ms. Bide Mindo – 7005853007

PROJECT CELL:

Imparting education through open and Distance learning mode involves wide-ranging planning, initiatives and strategies to ensure quality education. The Institute of Distance Education

has established a ‘Project Cell’ to carry out various research projects on suitability of study materials, constraints, opportunities, initiatives and strategies from time to time on considering the demands of higher education systems.

4.1 M.A .Programme

The Distance Education Programme has introduced M. A. in seven subjects viz. Economics, Education, English, Hindi, History, Sociology and Political Science. The syllabus of PG course has been approved both by the Academic Council of the Rajiv Gandhi University and Distance Education Bureau and is at par with the course offered under regular mode.

Contact and Counselling Programme is mandatory for learners pursuing M.A. Admission will be open at all study Centres but CCP and Examination will be held only at the IDE headquarters, RGU and JNC, Pasighat.

The structure of courses for M.A.1st, 2nd, 3rd and 4th Semester shown in Table-1. The course outline will be given in the syllabus provided:

Subjects Offered	Education, Economics, English, Hindi, Political Science, History and Sociology		
Year	Papers	No of Papers	Marks
M.A.1 st Semester	Paper– 401	1	100*
	Paper–402	1	100*
	Paper–403	1	100*
	Paper–404	1	100*
M. A. 2 nd Semester	Paper– 405	1	100*
	Paper–406	1	100*
	Paper–407	1	100*
	Paper–408	1	100*
M.A.3 rd Semester	Paper–501	1	100*
	Paper–502	1	100*
	Paper–503	1	100*
	Paper–504	1	100*
M.A.4 th Semester	Paper–505	1	100*
	Paper–506	1	100*
	Paper–507	1	100*
	Paper–508	1	100*
Total Marks			1600

*This includes both the internal assessment and the term end theory examination.

4.1.1 Title of the Papers in M.A. Programs

Paper Code Paper Title

(i) M. A. in Economics

MAECO-401 Micro Economic Theory –I
MAECO-402 Macro Economic Theory
MAECO-403 Public Finance –I
MAECO-404 Mathematics
MAECO-405 Micro Economic Theory-II
MAECO-406 Monetary Economics
MAECO-407 Public Finance –II
MAECO-408 Statistics
MAECO-501 Development Economics –I
MAECO-502 International Economics –I
MAECO-503 Indian Economics
MAECO-504 Environment and Population Economics
MAECO-505 Development Economics –II
MAECO-506 International Economics –II
MAECO-507 North-East Economics
MAECO-508 Agricultural Economics

(ii) M.A.in Education

MAEDN-401 Philosophical Perspectives of Education
MAEDN-402 Educational Psychology: Growth and Development
MAEDN-403 Methodology of Research in Education
MAEDN-404 Teacher Education
MAEDN-405 Sociological Perspectives of Education
MAEDN-406 Educational Psychology: Learning, Intelligence and Personality
MAEDN-407 Educational Statistics
MAEDN-408 Problems of School Education and Higher Education
MAEDN-501 Educational Technology
MAEDN-502 Curriculum Development
MAEDN-503 Educational Evaluation
MAEDN-5041 Environmental Education
MAEDN-5042 Education for Human Rights
MAEDN-505 Instructional and Behavioural Technology
MAEDN-506 Curriculum Evaluation
MAEDN-507 Guidance and Counselling
MAEDN-5081 Environmental Education and Quality of Life
MAEDN-5082 Women Education and Empowerment

(iii) M.A.in English

MAENG-401 Introductory Linguistics, Phonetics and Modern English Usage-I
MAENG-402 English Drama from the Elizabethan to the Restoration Period
MAENG-403 English Poetry from the Fourteenth to Eighteenth Century
MAENG-404 Fiction-I
MAENG-405 Introductory Linguistics, Phonetics and Modern English Usage-II
MAENG-406 Modern English Drama

MAENG-407 English Poetry from the Romantic to the Modern Period
MAENG-408 Fiction-II
MAENG-501 Literary Criticism and Theory-I
MAENG-502 Indian English Literature—I
MAENG-503 American Literature-I
MAENG-504 Literature and Gender-I
MAENG-505 Literary Criticism and Theory-II
MAENG-506 Indian English Literature—II
MAENG-507 American Literature-II
MAENG-508 Literatures and Gender-II

(iv) M. A.in Hindi

MAHIN-401 हिंदीसाहित्यकाइतिहास –I
MAHIN-402 आदिकालीनऔरमध्यकालीनकाव्य)अ(
MAHIN-403 लोकसाहित्य –I
MAHIN-404 भाषाविज्ञान ,हिंदीभाषाऔरदेवनागरीलिपि – I
MAHIN-405 हिंदीसाहित्यकाइतिहास –II
MAHIN-406 आदिकालीनऔरमध्यकालीन)ब(
MAHIN-407 लोकसाहित्य –II
MAHIN-408 भाषाविज्ञान ,हिंदीभाषाऔरदेवनागरीलिपि – II
MAHIN-501 आधुनिककाव्यI
MAHIN-502 हिंदीगद्यासाहित्यI
MAHIN-503 प्रयोजनमूलकहिंदीI
MAHIN-504 भारतीयकाव्यशास्त्रएवंसमालोचना
MAHIN-505 आधुनिककाव्यII
MAHIN-506 हिंदीगद्यसाहित्यII
MAHIN-507 प्रयोजनमूलकहिंदीII
MAHIN-508 पाश्चात्यकाव्यशास्त्रएवंप्रमुखआलोचक

(v) M.A.in History

HISC-401 History of India (Early times-1200 AD) –I
HISC-402 History of India (1200-1707 AD) –I
HISC-403 History of North East India (Early times-1947) – I
HISC-404 History of the World (1453-1815) – I
HISC-405 History of India (Early times-1200 AD) –II
HISC-406 History of India (1200-1707 AD) –II
HISC-407 History of North East India (Early times-1947) – II
HISC-408 History of the World (1453-1815) – II
HISC-501 History of India (1707-1857)–I
HISC-502 History of India (1707-1857)–I
HISC-503 History of Arunachal Pradesh (Early times-1972 AD) - I

HISC-504	History of the World (1815-1945 AD)
HISC-505	History of India (1707-1857)–II
HISC-506	History of India (1857-1947)–II
HISC-507	History of Arunachal Pradesh (Early times-1972 AD) – II
HISC-508	History of the World (1815-1945 AD)

(vi) M.A.in Political Science

MAPOLS-401	Political Thought
MAPOLS-402	International Politics
MAPOLS-403	Dynamics of Indian Politics - I
MAPOLS-404	Government and Politics in North East India
MAPOLS-405	Contemporary Political Thought
MAPOLS-406	Foreign Policy of India and world
MAPOLS-407	Dynamics of Indian Politics -II
MAPOLS-408	Government and Politics in Arunachal Pradesh
MAPOLS-501	Modern Political Analysis -I
MAPOLS-502	Public Administration
MAPOLS-503	Modern Indian Political Thinkers
MAPOLS -504	Comparative Political Systems
MAPOLS-505	Modern Political Analysis -II
MAPOLS-506	Welfare Administration
MAPOLS-507	Freedom Movement & Constitutional Development
MAPOLS-508	World Constitutions

(vii) M.A.in Sociology

MASOC-401	Classical Sociological Thinkers (Part I)
MASOC-402	Perspectives on Indian Society (Part I)
MASOC-403	Methodology of Social Research (Part I)
MASOC-404	Rural Sociology (Part I)
MASOC-405	Classical Sociological Thinkers (Part II)
MASOC-406	Methodology of Social Research (Part II)
MASOC-407	Perspectives on Indian Society (Part II)
MASOC-408	Rural Sociology (Part II)
MASOC-501	Modern Classical Thinkers
MASOC-502	Sociology of Northeast India
MASOC-503	Urban Sociology
MASOC-504	Sociology of Development
MASOC-505	Modern Sociological Thinkers
MASOC-506	Sociology of Northeast India
MASOC-507	Urban Sociology
MASOC-508	Sociology of Development

4.1.2 Duration of the Course

MA Programme is of **two years** duration. The course has to be completed within **Five years** of admission to the programme.

4.2 B.A.Programme

The Distance Education Programme has adopted the syllabus of UG(Pass)course of regular formal degree course of Rajiv Gandhi University. The structure of courses for First Year B.A.(FYBA), Second Year B.A.(SYBA) and Third Year B.A.(TYBA) is shown in Table-2. The course outline will be given in the syllabus provided:

Year	Subjects	No of Papers	Marks
BA 1 st Semester	English(Compulsory P-101)	1	100*
	First Elective (P- 101)	1	100*
	Second Elective (P- 101)	1	100*
	Third Elective(P-101)	1	100*
BA 2 nd Semester	English (Compulsory P- 102)	1	100*
	First Elective (P- 102)	1	100*
	Second Elective (P- 102)	1	100*
	Third Elective (P- 102)	1	100*
BA 3 rd Semester	English (Compulsory P- 201& 202)	2	200*
	First Elective (P- 201)	1	100*
	Second Elective (P- 201)	1	100*
BA 4 th Semester	English (CompulsoryP- 203& 204)	2	200*
	First Elective(P-202)	1	100*
	Second Elective (P- 202)	1	100*
BA 5 th Semester	First Elective (P – 301 & 302)	2	200*
	Second Elective (P-301 & 302)	2	200*
BA 6 th Semester	First Elective (P – 303 & 304)	2	200*
	Second Elective (P- 303& 304)	2	200*
	Total Marks		1200*

*This includes both the internal assessment and the term end theory examination.

4.2.1 Title of Papers in BACourse:

	Paper Code	Paper Title
<i>(i) B.A.in Economics</i>	BAECO 101	Economic Theory -I
	BAECO 102	Economic Theories -II
	BAECO 201	Money & Banking
	BAECO 202	International Trades
	BAECO 301	Public Finance and Statistics –I
	BAECO 302	Indian Economy
	BAECO 303	Public Finance and Statistics –II
	BAECO 304	Economy of Arunachal Pradesh

(ii) B.A.in Education

- BAEDN101: Basic Elements of Education
BAEDN102: Elements in Education
BAEDN201: Essential Foundation of Education
BAEDN202: Foundation of Education
BAEDN301: Curriculum and Evaluation
BAEDN302: Issues and Challenges in Indian Education
BAEDN303: Teaching Process
BAEDN304: Trends and Issues in Indian Education

(iii) B.A.in English

- BAENC101 English Compulsory- I (Basic Remedial Skills & Remedial Grammar I)
BAENG101 Introducing English Literature-I
BAENC102 English Compulsory-II (Basic Remedial Skills & Remedial Grammar II)
BAENG102 Introducing English Literature-II
BAENC201 English Compulsory-III (Advanced Grammar and Applied Language Skills- I)
BAENG202 English Compulsory-IV (English Literary Texts I)
BAENG201 Introducing English Literature III
BAENC203 English Compulsory V (Advanced Grammar and Applied Language Skills-II)
BAENC204 English Compulsory VI (English Literary Texts-II) BAENG202 Introducing English Literature IV)
BAENG301 Reading Poetry and Drama I
BAENG302 Reading Prose and Fiction I
BAENG303 Reading Poetry and Drama II
BAENG304 Reading Orise abd Fiction II

(iv) B.A.in Hindi

- BAHIN101 सामान्य हिंदी I-
BAHIN-102 सामान्य हिंदी -II
BAHIN-201 सामान्य हिंदी -III
BAHIN-202 सामान्य हिंदी -IV
BAHIN-301 हिंदी गद्य -I
BAHIN-302 'भारतीय काव्यशास्त्र एवं भाषा विज्ञान'-I
BAHIN-303 हिंदी गद्य -II
BAHIN- 304 भारतीय काव्यशास्त्र एवं भाषा विज्ञान'-I

(v) B.A.in History

- BAHIS 101 History of North-East India (1228-1947)-I
BAHIS 102 History of North-East India (1228-1947) -II
BAHIS 201 History of India upto 1526 AD – I
BAHIS 202 History of India upto 1526 AD – II

BAHIS 301	History of India from 1526 - 1947 – I
BAHIS 302	World History (1500-1950) -I
BAHIS 303	History of India from 1526 - 1947 – II
BAHIS 304	World History (1500-1950) -II

(vi) B.A.in Political Science

BPOL- 101	Indian Political Systems
BPOL- 102	Indian Political Systems -II
BPOL- 201	Political Theory-I
BPOL- 202	Political Theory-II
BPOL- 301	Comparative Politics-I
BPOL -302	State Politics in India (With Special Reference to Arunachal Pradesh - I
BPOL- 303	Comparative Politics-II
BPOL - 304	State Politics in India (With Special Reference to Arunachal Pradesh) II

(vii) B.A.in Sociology

BASOC-101	Introduction of sociology- part I
BASOC-102	Introduction of sociology- part II
BASOC-201	Classical sociological thought- part I
BASOC-202	Classical sociological thought- part II
BASOC-301	Society in India Part I
BASOC-302	Social Reseaerch Part I
BASOC-303	Society in India- part II
BASOC-304	Social research- part II

(vii) B.A.in Tribal Studies

BATS-101	Tribal Studies: Meaning and Concepts
BATS-102	Tribal Studies: Approaches and Research Methods
BATS-201	Tribes in India and in Arunachal Pradesh
BATS-202	Tribal Economy and Contemporary Issues (with special reference to A.P)
BATS-301	Tribal Rights and Social Movement
BATS-302	Constitutional Provisions for Tribes in India
BATS-303	Issues relating to Tribes in India
BATS-304	Tribal Development in India

Detailed syllabus in each paper shall be supplied with the self-instruction study material irrespective paper(s).

4.2.2 Subject Combination/Choice

a. B.A. 1st & 2nd Semester

English Compulsory and any three elective subjects, **two (2) from Group A** and **one (1) from Group B**:

Group A

English or Hindi
Political Science
Sociology or Tribal Studies

Group B

Education
History
Economics

b. B.A. 3rd & 4th Semester

*English Compulsory: Paper-II and III.

*One subject of the two elective opted in (1st & 2nd Semester) from Group A

* Elective Subject opted in (1st & 2nd Semester) from Group B.

c. B.A. 5th & 6th Semester

Two papers (Paper-III&IV) of each of the two elective subject opted in SYBA

4.2.3 Duration of Course

BA Programme is of **three years** duration. The course has to be completed within **six years** of admission to the programme.

4.2.3 Institute of Distance Education, RGU Offers Diploma and Certificate courses:

- i) Certificate Course in Fisheries Technology (CCFT)
- ii) Certificate Course in English for Communication (CCEC)
- iii) Certificate Course in Cyber Security (CCCS)
- iv) Certificate Course in Introduction to Mobile Architect (CCIMA)
- v) Diploma in Multimedia & Animation
- vi) Certificate Course in Barefoot Wireless Engineers (CCBWE)
- vii) Certificate Course in Digital Video Editing (CCDVE)
- viii) Certificate Course in Japanese Language (Basic) (CCJL(B))

5 Information About Admission

5.1. Eligibility

5.1.1 MA Program

Graduates under 10+2+3 acquired from institutions/universities recognized by the Rajiv Gandhi University and fulfil other requirements laid down in the regulations forth examinations concerned.

- (a)** Students passing M.A. 1st semester under Distance Education Programme from Rajiv Gandhi University will be eligible for admission to sM.A.2nd semester course of the Distance Education Programme. The same pattern will apply for the 3rd and 4th semester. *The learners of M. A. Programme who get back paper/s in the end semester examination can take admission in then extclass. However the degree has to*

be completed within five years irrespective of chances available for reappear only.

- (b) A candidate who is allotted University (Distance Education Program) roll number to appear in First Semester of M.A. shall only be allowed to take admission in the successive semesters.

5.1.2 BA Program

- (a) Students passing 10+2 /PU(Arts, Science, or Commerce for present course)or equivalent from any recognized Board/University or National Open School, with English as one of the compulsory subject, will be eligible for admission to the B.A.1st semester degree course of the Distance Education Programme.
- (b)** Students passing B.A.2nd semester under Distance Education Programme from Rajiv Gandhi University will be eligible for admission to B.A.3rd Semester. The same rule will apply for successive 4th, 5thand 6thsemester degree course of the Distance Education Programme, respectively. *The learners of B.A. Programme who get back paper/s in the end semester examination can take admission in the next class. However, the degree has to be completed within six years,irrespective of chances available for reappear only.*
- (c) A candidate who is allotted University (Distance Education Program) roll number to appear in First Semester of B.A. shall only be allowed to take admission in the successive semesters.

5.1.3. Certificate Course in Fisheries Technology (CCFT)

Students passing Class-X or equivalent from any recognized Board/University or National Open School will be eligible for admission to the Certificate Course in Fisheries Technology.

5.1.4 Certificate Course in English for Communication (CCEC)

Students passing Class-XII and above or with equivalent qualification (any two years course after Class-X from any stream) recognized by Central/State Boards/Universities, institutions, etc. including National Open School will be eligible for the Certificate Course in English for Communication.

5.1.5 Certificate Course in Cyber Security (online)

Students passing Class-X or equivalent from any recognized Board/University or National Open School will be eligible for admission to the Certificate Course in Cyber Security.

5.1.6 Certificate Course in Introduction to Mobile Architecture(online)

Students passing Class-X or equivalent from any recognized Board/University or National Open School will be eligible for admission to the Certificate Course in Introduction to Mobile Architecture.

5.1.7 Diploma in Multimedia and Animation (online)

Students passing Class-X or equivalent from any recognized Board/University or National Open School will be eligible for admission to the Diploma in Multimedia and Animation

5.1.8 Certificate Course in Barefoot Wireless Engineers(online)

Students passing Class-X or equivalent from any recognized Board/University or National Open School will be eligible for admission to the Certificate Course in Barefoot Wireless Engineers

5.1.9. Certificate Course in Digital Video Editing (online)

Students passing Class-X or equivalent from any recognized Board/University or National Open School will be eligible for admission to the Certificate Course Digital Video Editing.

5.1.10 Certificate Course in Japanese Language (Basic) (online)

Students passing Class-X or equivalent from any recognized Board/University or National Open School will be eligible for admission to the Certificate Course in Japanese Language (Basic).

- * Admission process of IDE, RGU is done completely online.
- * The candidate her/himself has to come to the study centre for admission on or before the last date.
- * There is no provision for on-the-spot admission.
- * The admitted candidate will be provided immediately SISM and enrolment number (ERN).
- * Furnish all the information correctly and neatly on the application, examination, and registration form.
- * Affix their cent passport size colour photo sat specified spaces and attach 2 extra photos with the Admission Form
- * Fill in the particulars on the Identity Card and affix a stamp size colour photo.
- * Write your Enrolment Number (ERN) and subjects on the last page of the prospectus.
- * Keep your Identity Card and Prospectus till the completion of the course.
- * Candidates must produce their Identity Card for any queries.
- * Right to admission is reserved with the IDE.
- * No cash will be accepted

6.1 Requirement for Admission

1. A print out of the Confirmation Page downloaded at the time of online form fill-up.
2. A print out of the payment receipt generated after payment is done.
3. Photo copies of Class X marksheet and Certificate(2sets)
4. Photo copies of Class XII/10+2 from recognised Board(2sets)
5. Photo copies of Graduation Marksheet(2sets): **Only for MA Course.**
3. Recent passport size photos 3 Nos.& one stamp size photo for I/card.
4. SC/ST certificate (2nos.).
5. Original Registration card if already registered with RGU.
6. Original CI-X Certificate and CI-XII marksheets for verification.
7. Copy of Academic Banks of Credit (ABC) ID
8. Photocopy of the Voter ID card/Driving License or any other valid photo identity proof.
9. In-service candidates have to submit a photocopy of their government Identity Card
10. For taking admission in any semester after the first semester BA or M.A., candidates must bring their previous identity card, admit card, marksheet (including back paper marksheet), confirmation page (print) and payment receipt (print).

6.2 Number of forms to be filled at the time of admission

At the time of admission, the candidate has to fill in the following forms:

- (i) Online Admission Form
- (ii) Admit Card
- (iii) Attendance Sheet
- (iv) Identity Card

6.3 Identity Card

The students will be issued an Identity Card by the IDE. The students are advised to keep the Identity Card safely till the completion of the course. Students will have to produce the Identity Card at the time of contact and counselling classes and examinations and when asked to do so by the authorities. If the original Identity card is lost, a duplicate card can be obtained from the IDE on payment of ₹50/-

6.4 Enrolment Number (ERN)

On admission the students will be assigned ERN by the IDE. In all communications addressed to the Institute of Distance Education/Study Centre, reference of the ERN should be given. Letters received without ERN will not be entertained.

6.5 Registration Number

All the candidates admitted to any course offered in the Institute of Distance Education will be assigned new registration number (RGN) by the university. For this original marks sheets and certificates of previous examinations are mandatory.

If any candidate fails to appear in all papers in First renew his/her admission to the course on payment of the following fees per the break up given in **TABLE-3** in page 14.

In such cases, **SLM's will not be provided again to the candidate.** In any case the degree is to be completed within the maximum time limit prescribed for the course from the date of admission/renewal of admission in the course. If already registered the candidate has to submit the original registration card for renewal of admission.

TABLE-3

Sl.No.	Details	Amount	
		BA	MA
1	Re-admission Fee (Half), including I Card	₹300.00	₹500.00
2	Re-registration Fee (Full)	₹300.00	₹500.00
3	Central Examination Fee (Full)	₹560.00	₹1400.00
4	Assignment Response Form	₹250.00	₹300.00
5	Assignment Evaluation	₹600.00	₹1000.00
6	Centre fee	₹200.00	₹300.00
7	Centre Examination fee	₹240.00	₹600.00
Total		₹2450.00	₹ 4600.00
*To be deposited online.			
**Cash will not be accepted.			

6.6 Rejection of Admission Form

The admission form can be rejected due to any of the following reasons:

1. The Rajiv Gandhi University does not recognize the qualifying examination as minimum qualification.
2. The form is incomplete or the required documents are not attached or photographs are not affixed and/or attested.
3. The admission form is not signed by the candidate himself or herself.
4. The admission to a course will be cancelled for period decided by the authority if he/she is found to be involved in unfair means in examination.
- 5.

7. Personal Contact and Counselling programme and Submission of Assignment

7.1 Personal contact and counselling programme (PCCP)

The IDE and the Study Centers organize PCCP as per the calendar of the Institute.

Attendance in Contact and Counseling programme is compulsory for M. A. as well as professional and vocational courses. However, for BA programme it is optional.

Every candidate must submit completed assignment booklets **within the specified date (see section12)**. It is one of the essential components of examination. The students are supposed to obtain minimum percentage of marks in assignment as per university rules (40%).

In case one is not able to submit assignments/he will be declared absent. /He will be automatically declared fail/in eligible.

8.1. Fees Structure for MA Program

The semester wise breakup of MA program is given below in Table 4

TABLE-4

Details	MA 1st Semester	MA 2nd Semester	MA 3rd Semester	MA 4th Semester
Course Fee	₹ 700.00	₹ 700.00	₹ 700.00	₹ 700.00
Admission Fee	₹ 500.00	₹ 500.00	₹ 500.00	₹ 500.00
Registration Fee	₹ 450.00	---	---	---
Central Examination Fee	₹ 1,600.00	₹ 1,600.00	₹ 1,600.00	₹ 1,600.00
Marksheet Fee	₹ 250.00	₹ 250.00	₹ 250.00	₹ 250.00
Self-Learning Material	₹ 3,500.00	---	₹ 3,500.00	---
Assignment Evaluation Fee	₹ 300.00	₹ 300.00	₹ 300.00	₹ 300.00
Counselling Fee	₹ 700.00	₹ 700.00	₹ 700.00	₹ 700.00
Identity Card Fee	₹ 100.00	₹ 100.00	₹ 100.00	₹ 100.00
Continuation Fee		₹ 500.00	₹ 500.00	₹ 500.00
Assignment Response Fee	₹ 250.00	₹ 250.00	₹ 250.00	₹ 250.00
Centre Fee	₹ 300.00	₹ 300.00	₹ 300.00	₹ 300.00
Library Fee	₹ 100.00	₹ 100.00	₹ 100.00	₹ 100.00
Total	₹ 8,750.00	₹ 5,300.00	₹ 8,800.00	₹ 5,300.00

N.B: The candidates who have passed their qualifying exam in outside Arunachal Pradesh have to pay ₹100/- as eligibility fee

8.2. Fees Structure for BA Program

The semester wise breakup of MA program is given below in Table 4

TABLE-5

FEE STRUCTURE OF BACHELOR OF ARTS						
Details	BA 1st Semester	BA 2nd Semester	BA 3rd Semester	BA 4th Semester	BA 5th Semester	BA 6th Semester
Admission Fee	₹ 200.00	₹ 200.00	₹ 200.00	₹ 200.00	₹ 200.00	₹ 200.00
Registration Fee	₹ 450.00					
Central Examination Fee	₹ 800.00	₹ 800.00	₹ 800.00	₹ 800.00	₹ 800.00	₹ 800.00
Continuation Fee		₹ 200.00	₹ 200.00	₹ 200.00	₹ 200.00	₹ 200.00
Marksheet Fee	₹ 250.00	₹ 250.00	₹ 250.00	₹ 250.00	₹ 250.00	₹ 250.00
Self-Learning Material	₹ 2,500.00		₹ 2,500.00		₹ 2,500.00	
Assignment Evaluation Fee	₹ 200.00	₹ 200.00	₹ 200.00	₹ 200.00	₹ 200.00	₹ 200.00
Identity Card Fee	₹ 100.00	₹ 100.00	₹ 100.00	₹ 100.00	₹ 100.00	₹ 100.00
Assignment Response Fee	₹ 250.00	₹ 250.00	₹ 250.00	₹ 250.00	₹ 250.00	₹ 250.00
Centre Fee	₹ 200.00	₹ 200.00	₹ 200.00	₹ 200.00	₹ 200.00	₹ 200.00
Counselling Fee	₹ 300.00	₹ 300.00	₹ 300.00	₹ 300.00	₹ 300.00	₹ 300.00
Total	₹ 5,250.00	₹ 2,500.00	₹ 5,000.00	₹ 2,500.00	₹ 5,000.00	₹ 2,500.00

N.B: The candidates who have passed their qualifying examination outside Arunachal Pradesh have to pay` 100/- as eligibility fee.

8.3 Fee for Certificate Course in English

A total amount of Rs.6950.00(Six Thousand Nine Hundred Fifty) only will be collected at the time of admission.

8.4. Fee for Certificate Course in Fisheries Technology

A total amount of Rs.8850.00(Rupees eight thousand eight hundred fifty) only will be collected at the time of admission.

8.5 Fee for Certificate Course Cyber Security

A total amount of Rs.3750.00(Three Thousand Seven Hundred Fifty) only will be collected at the time of admission.

8.6. Fee for Introduction to Mobile Architecture

A total amount of Rs.3750.00(Three Thousand Seven Hundred Fifty) only will be collected at the time of admission.

8.7. Fee for Diploma in Multimedia and Animation

A total amount of Rs.3750.00(Three Thousand Seven Hundred Fifty) only will be collected at the time of admission.

8.8. Fee for Barefoot Wireless Engineers

A total amount of Rs.3750.00(Three Thousand Seven Hundred Fifty) only will be collected at the time of admission.

8.9. Fee for certificate Course in Digital Video Editing

A total amount of Rs.3750.00(Three Thousand Seven Hundred Fifty) only will be collected at the time of admission.

8.10. Fee for Certificate Course in Japanese Language

A total amount of Rs.6950.00(Six Thousand Nine Hundred Fifty) only will be collected at the time of admission.

9. Examination

- The end semester examination is conducted twice in a year.

9.1 Medium of Examinations

- The medium of examination will be English for all the subjects except for those subjects where the learners will need to write in respective languages.

9.2 Examination Centre(s)

- The semester examination will be held at the Institute of Distance Education, Rajiv Gandhi University or in its Study Centres if approved by the University authority.
- In case a learner wants to change the examination/study centre he/she has to pay `500/ as fee for change of centre. No request for change of exam/study centre will be entertained after one month of admission. **The application is to be forwarded by the respective Centre Coordinator.**

9.3 Examination schedule

- The final written and practical examination will be conducted as per schedule declared by the University. The duration and medium of instruction will be as per approved syllabus.
- The examination will be conducted in Study Centres or any other Centre approved by the University keeping in views the number of examinees.

9.4. Back Paper/Reappearance:

- A candidate can reappear in all the papers or in papers in which she/he has failed after duly filling up examination forms as per rules of the University.
- The candidates appearing in back paper can get examination form from the Study Centre and fill in the form as detailed below:

Back paper Examination fee (including centre fee)B.A.

For one paper	:	₹ 250/-
For two papers	:	₹450/-
For 3or more papers	:	₹650/-

Back paper Examination fee (including centre fee) *M.A.*

For each Paper : ₹300/-

• **Enclosures**

- Recent passport size colour photo: 3 Nos. Per examination form.
- Photocopy of mark sheet of last examination appeared.
- Separate Back paper examination form for 1st /2nd /3rd year examination.

- The repeaters, if any, will fill in the examination form for back paper within 30 days of declaration of the respective result.
- A candidate who fails to clear all the subjects in one chance shall also be allowed to reappear in all the subjects so as to clear the course within the prescribed time limit.
- A candidate can re-appear in all the papers and/or in papers which s/he cannot clear after duly filling of examination form and paying prescribed fees. The chances of reappearance shall not be fixed except that all the papers shall be cleared within the given maximum prescribed time limit to clear the course.
- The end semester examinations shall ordinarily be conducted twice in a year for each programme on such dates and centres as maybe notified by the University from time to time.

9.5 Collection of Admit Cards and examination routine

- Admit Cards and Examination schedule may be collected at least 15 days before the examination from the respective study centre. **No Admit Card and examination schedule will be sent by post.**

9.6 Duplicate Admit Card

- Duplicate Admit Card will be issued on the basis of FIR report of lost card from the Police Station. The fee for issue of Duplicate Admit Card is `100/- per card.

9.7 Pass requirement

9.7.1 M.A.

- The weight age for internal and term end final theory examination of MA or any other equivalent programme introduced shall be at par with the regular candidates of the Colleges affiliated to this University. A candidate is required to secure 40% marks in assignments as well as in written theory examination separately subject to 45% in aggregate. A candidate who fails to secure the above prescribed marks in assignments and written separately shall be allowed to reappear in paper(s). However, if the candidate has already cleared assignment/ practical requirement the marks obtained in assignments and practical shall be carried over. But the degree has to be completed within the prescribed maximum period for the programme from the date of admission/ re-admission.

9.7.2B.A.

The weight age for internal and term end final theory examination of general programme such as BA or any other equivalent programme introduced shall be at par with the regular candidates of the Colleges affiliated to this University. A candidate is required to secure 40% marks in assignments and at least 33% marks in written theory examination separately, subject to 35% in aggregate. A candidate who fails to secure the above prescribed marks in assignments and written separately shall be allowed to reappear in paper(s). However, if the candidate has already cleared assignment/ practical requirement the marks obtained in assignments and practical shall be carried over. But the degree has to be completed within the prescribed maximum period for the programme.

10. Other Information

Learners are to remain in constant touch with the Institute of Distance Education, Rajiv Gandhi University to obtain updated information regarding contact and counselling, assignment submission and examination etc. The time schedule will be strictly followed. In this regard, no further correspondence will be made from the Institute of Distance Education, Rajiv Gandhi University until and unless some changes are made under compelling situation.

- (i) Hostel Accommodation: There is no provision of providing hostel accommodation to the learners of Distance Education in the University/study centre.
- (ii) Refund of Admission Fee: The total admission fee including other fee paid at the time of admission is non-refundable after being admitted/enrolled to the course.
- (ii) University reserves the right to take a decision to start/withdraw the courses mentioned in the prospectus.
- (iv) The learners of BA are advised to write the name of one more elective subject (as extra) so that subjects may be decided for them in case of lesser number of students in any subject.
- (v) All the fees are to be paid via online except the prospectus and cost of examination form for back paper.

- (vi) The fee for re-checking (or re-counting), re-evaluation (if any), duplicate marksheet/certificate, migration or convocation fee shall be as prescribed by the University from time to time and has to be paid directly to the University.
- (vii) The IDE learners are guided by the Distance Education Ordinance.
- (viii) During the Contact and Counselling Programme, bus service will be available from Bage Tinali (Nirjuli) to RGU.
- (ix) Bus service will be provided during the annual examination from Vivek Vihar to Rajiv Gandhi University Campus. The bus will start 1 hour 30 minutes before the commencement of examination from Itanagar. The learners have to pay the fare as fixed by the University.

LIST OF STUDY CENTRES OF THE INSTITUTE IN THE DIFFERENT PARTS OF THE STATE

Sl. No.	Study Centre	Name of Coordinator	Contact Number
1	Donyi-Polo Govt. College, Kamki	Dr. Gomin Ete	7629885574
2	Jawaharlal Nehru College, Pasighat	Dr. Lekhi Sitang	6909660308
3	Govt. College Bomdila	Dr. Tashi Tsumo	8794131316
4	Indira Gandhi Govt. College, Tezu	Dr. Nongja Singpho	9612417823
5	Rang Frah Govt. College, Changlang	Dr. Nending Butang	8794594898
6	Wangcha Rajkumar Govt. College, Deomali	Dr. Kheteon Ketey	8732068355
7	Saint Francis De-Seles, Aalo	Mr. Mimmo Ete	7640807285
8	Govt. College Seppa	Dr. Beori Yube	9862327682
9	Govt.College Doimukh	Dr. Johny Techhi	9774419424
10	Bini Yanga Govt. Women College, Lekhi	Dr. Kusum Babla	8974260556
11	Govt. College Yachuli	Dr. Puny Rigia	7085323349
12	Govt. College Daporijo	Dr. Akash Keyong	9612532395
13	Mahabodhi Lord Buddha College, Namsai	Nang Mohini Namchoom	9378099390
14	Namdapha Degree College, Miao	Ms Ritu Jugli	9378137400
15	Kasturba Gandhi Institute of Higher Education, Roing	Shri Napi Meto	8416099125